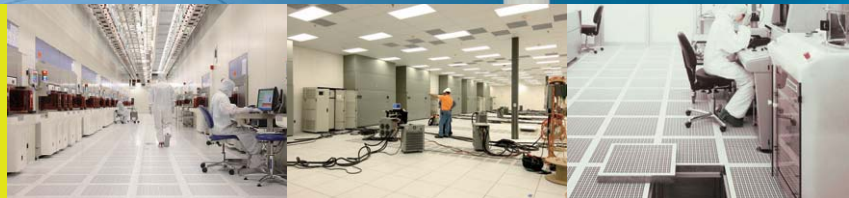




RhinoAlutec®  
Aluminum Perforated Panel



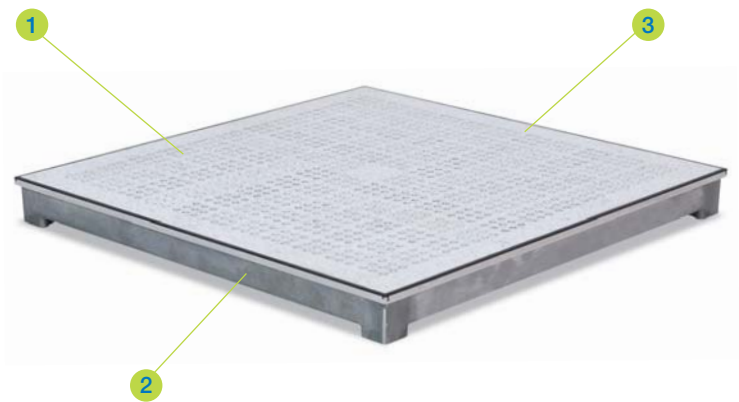
# ALP 1000/1250/1500

## Aluminum Perforated Panel

RhinoAlutec® aluminum perforated panel has the same lattice structure design of solid panel, the top of the panel is laminated with anti-static HPL or conductive vinyl, this perforated panel with 1,080 chamfered holes and nominal air open ratios from 17% - 25% are designed to meet specific air flow requirements for both data centers and clean rooms.

**RHINO®**  
*Strive for perfection!*

Panel



- 1

**Airflow Rates**  
Rates: 17% - 25%
- 2

**Aluminum Perforated Panel**  
Size: 600x600mm  
Thickness: 50/55mm  
Material: Aluminum Alloy
- 3

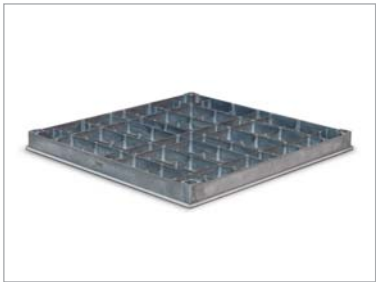
**Top Layer**  
Thickness: Various  
Material: HPL/ESD vinyl (PVC)

Description

RhinoAlutec® aluminum perforated panel has the same lattice structure design of solid panel, the top of the panel is laminated with anti-static HPL or conductive vinyl, this perforated panel with 1,080 chamfered holes and nominal air open ratios from 17% - 25% are designed to meet specific air flow requirements for both data centers and clean rooms.

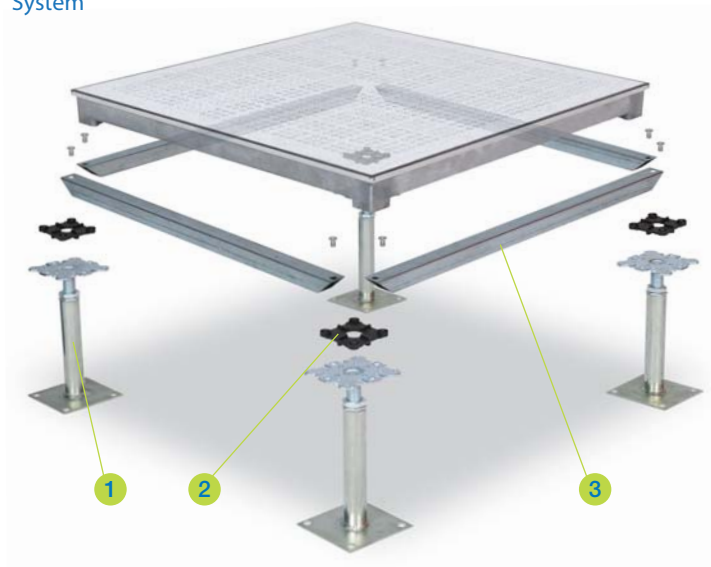
Features

- Anti-corrosion and anti-magnetic
- Impressive acoustic performance
- Superb underfoot comfort
- Light weight and high load capacity
- Wide range of covering options
- 17% - 25% airflow rates



Panel Type	Panel Size	Core Material	Panel Construction	Panel Thickness (Nominal)	System Weight (Typical)
ALP 1000	600mm square	Aluminum Alloy	Precision-machined with perforated and various finish on top	50/55 mm	31.07 Kg/m²
ALP 1250	600mm square	Aluminum Alloy	Precision-machined with perforated and various finish on top	50/55 mm	33.85 Kg/m²
ALP 1500	600mm square	Aluminum Alloy	Precision-machined with perforated and various finish on top	50/55 mm	36.63 Kg/m²

## System



### 1 Standard Pedestal

Hot-dip galvanized steel made pedestal is suitable for raised floors with a finished floor height from 150mm to 1800mm.  
Material: Steel, Hot-dip galvanized.

### 2 Head Gasket

Plastic conductive material with sound proofing and sealing functions, equipped with tabs for the positioning of panels.  
Thickness: 3.5 mm

### 3 Stringer

Steel tube performed stringer provide best supports to the structural system with limited air leakage and outstanding acoustic performance.  
Dimension: 543mm x 25mm x 25mm  
Thickness: 0.8/1.0/1.2mm

## Pedestal



### 1 Head Assembly

Head plate: 90mm x 90mm x 3.0mm  
Threaded rod: M18

### 2 Base Assembly

Base tube: Ø25mm x 2.5mm  
Base Plate: 100mm x 100mm x 2.5mm

### 3 FFH (Finished Floor Height)

150mm to 1800mm

### 4 Adjusting Range

+/- 30mm

## Performance

- This rigid grid system is tested in accordance with PSA MOB PS/SPU specification.
- Panel deflection at centre edge must not exceed 2.5mm
- Performance to a safety factor of 3 x static load
- Structural performance based upon a full Rhino access floors system i.e. panels & pedestals.



Panel Type	Panel Grade	Concentrated Load		Uniformly Distribution Load	Ultimate Load
		Point Load	Load Over		
		25mm x 25mm square	300mm x 300mm square		
ALP 1000	Heavy Duty	4.50 kN	5.56 kN	12.00 kN/m²	13.50 kN
ALP 1250	Extra Heavy Duty	5.56 kN	6.67 kN	16.00 kN/m²	16.68 kN
ALP 1500	Industrial Duty	6.67 kN	8.90 kN	20.00 kN/m²	20.01 kN

**Corporate Headquarters**

111 S.K.V. Building, 4<sup>th</sup> Floor  
Soi Sansabai, Klongton  
Klongtoey, Bangkok 10110  
Thailand

**T/** (662) 661 2990

**F/** (662) 661 2991

**China Office**

593, Tongjiang Road  
Jintian Plaza 828-830  
Changzhou 213022  
Jiangsu, China

**T/** (86) 519 8988 3171

**F/** (86) 519 8988 3901

**Hong Kong Office**

Unit 908, 9/F, LT Tower  
31 Chong Yip Street  
Kwun Tong, Kowloon  
Hong Kong

**T/** (852) 2865 6816

**F/** (852) 2865 6813

**Production Unit**

Hengshanqiao  
Wujin District  
Changzhou 213119  
Jiangsu, China

**T/** (86) 519 8860 7959

**F/** (86) 519 8860 5659

[www.RhinoAccessFloors.com](http://www.RhinoAccessFloors.com)