



## RhinoBluetec® Colorline 1

Homogeneous ESD Vinyl (PVC)



RhinoBluetec® homogeneous ESD vinyl (PVC) guarantees permanent stability on electro-conductive resistance ( $2.5 \times 10^4 \sim 1.0 \times 10^6 \Omega$ ) or static dissipative resistance ( $1.0 \times 10^4 \sim 1.0 \times 10^9 \Omega$ ), it has been widely used in electronic industry, semi-conductor industry, telecommunications industry, medical industry and healthcare environment. Rhino access floors with Bluetec® ESD vinyl finish is the best choice for computer room, clean room, laboratory, telephone/mobile phone switching center, facility control center, and places where request static control, dust free, and friendly environment.

**RHINO®**  
*Strive for perfection!*

# Product Ranges

## RhinoBluetec® PVC

### Description

RhinoBluetec® homogeneous ESD vinyl (PVC) guarantees permanent stability on electro-conductive resistance ( $2.5 \times 10^4 \sim 1.0 \times 10^6 \Omega$ ) or static dissipative resistance ( $1.0 \times 10^4 \sim 1.0 \times 10^9 \Omega$ ), it has been widely used in electronic industry, semi-conductor industry, telecommunications industry, medical industry and healthcare environment. Rhino access floors with Bluetec® ESD vinyl finish is the best choice for computer room, clean room, laboratory, telephone/mobile phone switching center, facility control center, and places where request static control, dust free, and friendly environment.

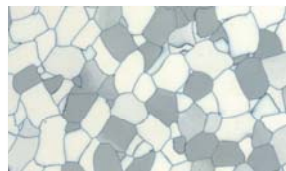


### Performance

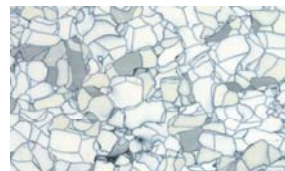
- Excellent electrical resistance
- Excellent fire resistance
- Excellent chemical resistance
- Excellent resistance to wear and tear
- Excellent resistance to scratching
- Excellent resistance to impact
- Excellent resistance to damp and static load resistance
- Easy to clean and maintenance
- Good dimensional stability



Bluetec® 601



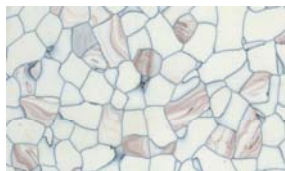
Bluetec® 602



Bluetec® 603



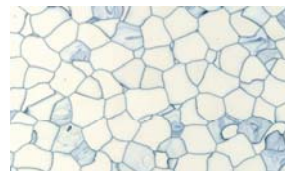
Bluetec® 604



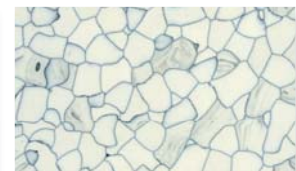
Bluetec® 605



Bluetec® 606



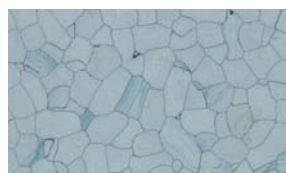
Bluetec® 611



Bluetec® 612



Bluetec® 614



Bluetec® 615



Bluetec® 616



Bluetec® 617

	Specification	Test Standard	Rhino Bluetec® Homogeneous ESD Vinyl	
<b>FLOOR CLASSIFICATION</b>	Type of Floor Covering	EN649	Homogeneous EC / SD Vinyl Flooring	
		ASTM F 1700	Class 1 - Type A, Solid Vinyl Tile	
		NFPA Life sfty code 101	Class 1 - Interior Floor Finish	
		NFPA 99 Standard for health care facility	Meets Standard	
	Floor Classification (Wear rating / Static load resistance)	EN 685	Commercial: 34 / Industrial: 43	
	No of Color		12	
<b>PHYSICAL FEATURES</b>	Cleanroom Classification	Federal Standard 209 E	Meets Class 1 Cleanroom Requirements	
	Outgassing: CVCM	ASTM E 594	CVCM 2.65%	
	Tile Dimension Size	EN 427	90° Press Cutting	600x600 / 610x610
		ASTM F 536: Size Tolerance (<±0.4mm / 305mm)		< ±0.4mm / 305mm
	Dimensional Stability	EN 434 /FED STD NO. 501a, M 6211		< 0.25%
		ASTM F 540: Square Tolerance (<0.51mm / 305mm)		< 0.51mm / 305mm
	Wear Layer Thickness	EN 429	2.00mm / 3.00mm	
	Wear Layer Reinforcement/Glossy Surface Treatment		Heat Surface Melting Coating	
	Total Thickness	EN 428		2.00mm / 3.00mm
		ASTM F 386: Thickness Tolerance (±0.13mm)		Meets Standard
	Weight / m²	EN 430		2.00mm: 3.10kg/m² / 3.00mm: 4.82kg/m²
	Wear Resistance (Abrasion / Thickness Loss)	EN 660-1		< 0.15mm
		EN 649		Group P
		ASTM D 4060 (CS-17 Wheel, 1,000 g, 1,000 cycles)		70mg
	Hardness	ASTM D 2240 (Type D)		67
	Residual indentation	EN 433 / Din 51955		< 0.04mm
		ASTM F 1914 (<8%)		< 8%
	Static Load Limit	ASTM F 970		2.00mm: 1,500lbs/ square inch; Long term, 3.00mm: 2,500lbs/ square inch; Long term
Flexibility	ASTM F 137		12.7mm mandrel without crack or breaking	
Castors Wheel test	EN 425		No Damage	
<b>ELECTRICAL FEATURES</b>	Electrical Resistance	DIN 51953 / EN 1081	EC 5.0x10 <sup>4</sup> < R < 10 <sup>9</sup> / SD 10 <sup>6</sup> < R < 10 <sup>8</sup>	
		ASTM F 150 / ESD F 7.1 / UL 779	EC 2.5x10 <sup>4</sup> ~1.0x10 <sup>9</sup> / SD 1.0x10 <sup>6</sup> ~1.0x10 <sup>9</sup>	
	Static Generation	EN 1815 / DIN 54 345		< 100 Volt with ESD Wax
		AATCC 134		< 100 Volt with ESD Wax
	Static Decay Time	Mil B 81705C (5Kv to 20v)		< 0.1 Sec with ESD Wax
EN 100015 (CECC 00015)			< 2.0 Sec with ESD Wax	
	FTM 101 B Method 4046 (<0.5 Sec)		< 0.01 Sec with ESD Wax	
<b>FIRE RESISTANCE</b>	Reaction to Fire	DIN 4102 / Onorm B3810 / Onorm B3800	B1 (Difficult to ignite)/Q1(Low smoke development)	
		BS 476; Part7, 1997	Class 2	
		prEN 13501-1	Class BFL S1	
		prEN ISO9239-1	0.8 kw/m²	
	Critical Radiant Flux	ASTM E 648 / NFPA 253	Class 1 (1.08w/cm²)	
	Flame Spread	ASTM E 162 / ASTM E 84 / NFPA 225	NFPA Class B / UBC Class II (<75)	
	Smoke Density	ASTM E 662 / NFPA 258	Passed (<450Dme)	
	Thermal Conductivity	DIN 52612 / NFX 10021	0.309 w/m.k	
Underfloor Heating	DIN 52612		Suitable - Max 30 C	
	ASTM F 1514 (ΔE < 8 ave, max)		< ΔE = 8.0	
<b>CHEMICAL RESISTANCE</b>	Chemical Resistance	EN 423 / DIN 51958	Excellent; Test Report available on request	
		ASTM D 543 / ASTM F 925	Excellent; Test Report available on request	
<b>SLIP RESISTANCE</b>	Slip Resistance	Wet	DIN 51130 / BGR181 (ZH1 / 571)	
			ADA Requirements	
		prEN 13893	R9	
	Slip Resistance	Dry	EN 13893	
			> 0.6	
			0.89μ	
<b>LIGHT RESISTANCE</b>	Color Fastness	EN 20105-B 02	> 6	
		ISO 105 B 02, Met. 3 - DIN53389	7	
	Resistance to Light	ASTM F 1515 (ΔE<8 ave, max)	< ΔE = 8.0	
<b>OTHER PROPERTIES</b>	Impact Sound Reduction	ISO 717 / 2	4 dB	
	Sound Absorption	ISO 140-8 / ISO 717	3 dB	
	Water Absorption	ASTM D 570	0.03% water weight gain	
	Ease of Decontamination	DIN 25415-1 / ISO 8690	Excellent	
	Recyclable		Yes	
Formulation		No Carbon contamination		

# **RHINO**<sup>®</sup>

*Strive for perfection!*

#### **Corporate Headquarters**

111 S.K.V. Building, 4<sup>th</sup> Floor  
Soi Sansabai, Klongton  
Klongtoey, Bangkok 10110  
Thailand

**T/** (662) 661 2990

**F/** (662) 661 2991

#### **China Office**

593, Tongjiang Road  
Jintian Plaza 828-830  
Changzhou 213022  
Jiangsu, China

**T/** (86) 519 8988 3171

**F/** (86) 519 8988 3901

#### **Hong Kong Office**

Unit 908, 9/F, LT Tower  
31 Chong Yip Street  
Kwun Tong, Kowloon  
Hong Kong

**T/** (852) 2865 6816

**F/** (852) 2865 6813

#### **Production Unit**

Hengshanqiao  
Wujin District  
Changzhou 213119  
Jiangsu, China

**T/** (86) 519 8860 7959

**F/** (86) 519 8860 5659

[www.RhinoAccessFloors.com](http://www.RhinoAccessFloors.com)