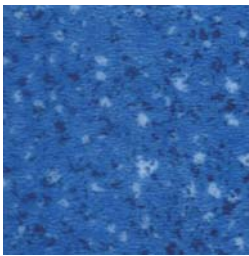




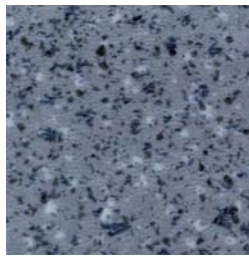
Color Line

DecorLux® Stone Grain

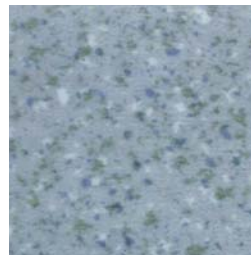
Material Data Sheet



HCF1002



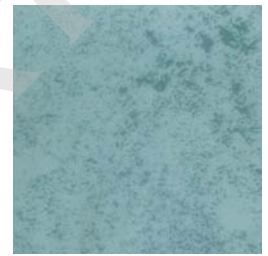
HCF1003



HCF1005



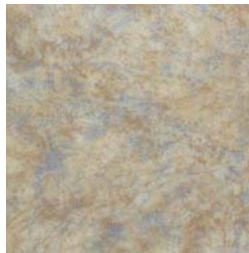
HCF2172-21



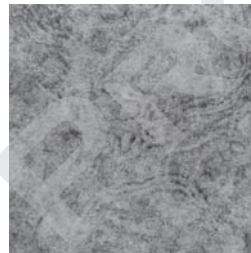
HCF2172-19



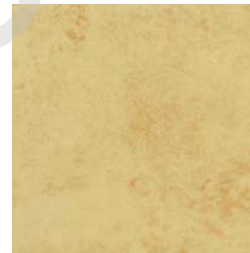
HCF8913



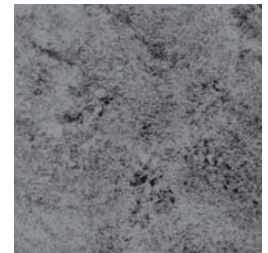
HCF2195-1



HCF2195-3



HCF2172-18



HCF2172-3



DecorLux® Stone Grain

Material Data Sheet

Features:

New fashioned & non-polluted ground decorative material multilayer, pressure resistant, wear resistant and antiseptic.

Application:

It has a good decoration effect and it can be widely used for shopping center, super market, school, hospital, office building, etc.

Specification:

Size: 457.2 x 457.2mm (18" x 18"); 600 x 600mm; 610 x 610mm

Wear layer: 0.07mm; 0.10mm; 0.20mm; 0.30mm; 0.50mm

Thickness: 2.0mm; 2.5mm; 3.0mm; 5.0mm

Item	Rate of size change at heating	Sunken Rate at 23 ^o C	Sunken Rate at 45 ^o C	Residual Indentation	Amount of wear	Combustion property
Standard	GB4085-83 SJ/T11236-2001	GB4085-83 SJ/T11236-2001	GB4085-83 SJ/T11236-2001	GB4085-83 SJ/T11236-2001	GB4085-83 SJ/T11236-2001	GB4085-83 FV-O SJ/T11236-2001
Index	≤0.20mm	≤0.30mm	≤0.60mm	≤0.15%	≤0.02g/cm ²	≤10s

Anti Corrosion:

HCL	ok	NaOH aqueous solution	ok
Alcohol	ok	Gasoline	ok
Acetone	ok	Ordinal detergent	ok

Brief Introduction to Installation:

1. The requirements of foundation

- 1) The ground should be waterstone ground, ceramic tile ground, wooden ground or cement ground.
- 2) The ground should be smooth and flat. Its unflatness should be less than 0.2%.
- 3) The ground should have enough strength and no surface dusting and separation phenomenon.
- 4) The ground should be dry. It needs 30 days for the new ground to become dry.

2. Procedure of installation

Clean the ground → Coat adhesive → Lay floor → Cleaning

3. Maintenance of floor

- 1) It is not permitted that the sharp and rough heavy matters scribe and drag on the surface of floor and that personnel who wear shoes with nails walk on the floor. The floor should be kept clean and dry.
- 2) It is not permitted that the chairs which have black rubber cushion put on the floor in order to avoid black sulfide polluting its surface.
- 3) If there is oil or dirty things on its surface, it may be cleaned with detergent. If there is scribed sign, it can be recovered by fine abrasive paper.
- 4) If there is heavy oil and dirty caused by installation, our factory has special washer to clean them.