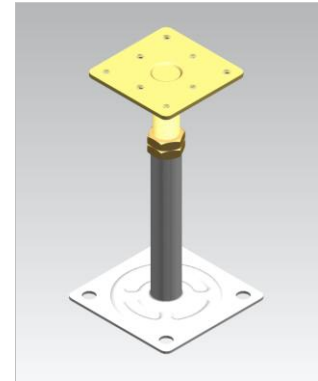


The system floor pedestal type SSP202 M16 from galvanized steel in combination with gaskets and optionally stringer type RSL600 is used as substructure with raised access floor systems. The system floor pedestals are entirely made by Rhino, from the design to the production including galvanization.

The system floor pedestal type SSP202 M16 creates the cavity for taking up installations. The system floor pedestal type SSP202 M16 offers exceptional flexibility by its high loadability and the high adjustment range. The pedestals are infinitely adjustable on height and can therefore take up irregularities of the subfloor.

- Unique flexibility
- High loadability
- Easy installation
- High corrosion protection
- Zinc-whisker free
- Can be combined with stringer type RSL600, RSL1200



### TECHNICAL DETAILS

Upper pedestal part	
Head plate	76 x 76 mm
Thickness	3.5 mm
Threaded bolt	M16
Lower pedestal part	
Foot plate	90 x 90 mm
Thickness	3.0 mm
Tube (FFH 80 - 600 mm)	Ø 20 x 2.0 mm

### STATIC

Ultimate load centric	≥ 27 kN
-----------------------	---------

### CORROSION PROTECTION

Corrosion protection class	Galvanized & blue passivated
Salt spray fog test	72 hours

### PEDESTAL VARIANTS

FFH	Part number	Adjustment range
80 mm (HILTI customized)	SSP202-M16-80	70 - 110 mm
90 mm (HILTI customized)	SSP202-M16-90	80 - 120 mm
100 mm (HILTI customized)	SSP202-M16-100	90 - 130 mm
150 mm	SSP202-M16-150	125 - 175 mm
200 mm	SSP202-M16-200	175 - 225 mm
250 mm	SSP202-M16-250	225 - 275 mm
300 mm	SSP202-M16-300	275 - 325 mm
350 mm	SSP202-M16-350	325 - 375 mm
400 mm	SSP202-M16-400	375 - 425 mm
450 mm	SSP202-M16-450	425 - 475 mm
500 mm	SSP202-M16-500	475 - 525 mm
550 mm	SSP202-M16-550	525 - 575 mm
600 mm	SSP202-M16-600	575 - 625 mm

FFH (Finished Floor Height) = floor tile + pedestal

We reserve the right to change specification or design and supply products which may differ from those described and illustrated without notice and without liability. ©2010-2025 Rhino Technologies Co., Ltd. SSP202-M16-v2025