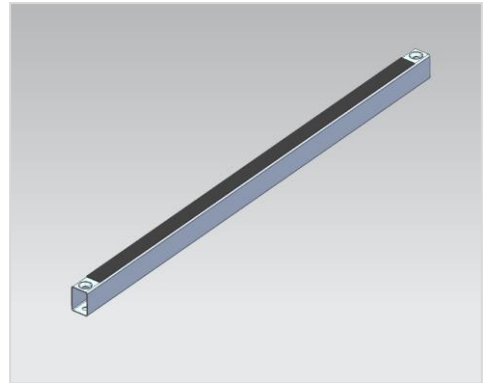


The rectangular tube stringer type RSL600 consists of cold-bent and welded, galvanized steel sheet and needs to be bolted on the head part of SSP101; SSP202 and SSP401 seismic pedestals. In this way, a wiry rattling can be prevented. At the ends, elliptical screw mounting holes provide flexibility of precise installation. To prevent air leakage, the rectangular tube stringer with sealing strip is needed.

The rectangular tube stringer type RSL600 is used for both the horizontal and vertical reinforcement, of the whole flooring-system. Depending on the used variant of construction and flooring-system components, different vertical load capacities of the system can be attained.

- To be used for an installation height of more than 150 mm
- Horizontal and vertical reinforcement
- Easy installation
- High corrosion protection
- Zinc-whisker free
- Suitable for the head part of SSP101, SSP202 and SSP 401 pedestals



TECHNICAL DETAILS

Length	572 mm
Width	21 mm
Height	32 mm
Thickness	1.0/1.2/1.5/1.8 mm

STATIC

Mid-span load (CISCA 2007)	≥ 1.5 kN (1.0 mm)
Mid-span load (CISCA 2007)	≥ 2.0 kN (1.2 mm)
Mid-span load (CISCA 2007)	≥ 2.5 kN (1.5 mm)
Mid-span load (CISCA 2007)	≥ 3.0 kN (1.8 mm)

CORROSION PROTECTION

Corrosion protection class	Galvanized & blue passivated
Salt spray fog test	72 hours

We reserve the right to change specification or design and supply products which may differ from those described and illustrated without notice and without liability. ©2010-2025 Rhino Technologies Co., Ltd. Type-RSL600-v2025