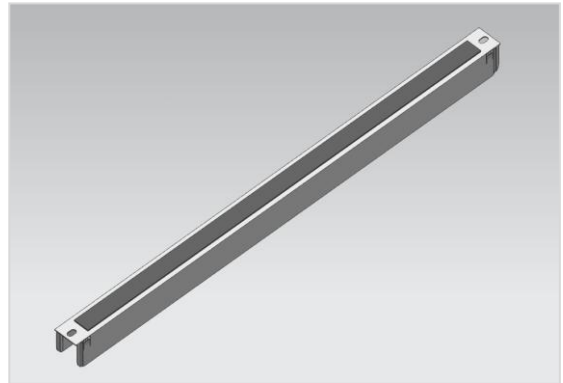


The reinforced profile type RL consists of cold-bent, galvanized steel sheet and needs to be clipped into the head part of M, H, S, or SW90-pedestals. In this way, a wiry rattling can be prevented. At the ends, elongated holes are situated, in order to provide an optional bolting. For increased load capacity, reinforcement profiles with sealing strips are needed.

The reinforced profile type RL is used for both the horizontal and vertical reinforcement, of the whole flooring-system. Depending on the used variant of construction and flooring-system components, different vertical load capacities of the system can be attained.

- To be used for an installation height of more than 150 mm
- Horizontal and vertical reinforcement
- Easy installation
- High corrosion protection
- Zinc-whisker free
- Suitable for the head part of M, H, S or SW90-pedestals



TECHNICAL DETAILS

Length	538 mm
Width	28 mm
Height	35 mm
Thickness	1.0 mm 1.2 mm (upon request)

STATIC

Ultimate load centric	≥ 1.5 kN
-----------------------	----------

CORROSION PROTECTION

Corrosion protection class	Galvanized Cold-bent
Salt spray fog test	72 hours

We reserve the right to change specification or design and supply products which may differ from those described and illustrated without notice and without liability. ©2010-2025 Rhino Technologies Co., Ltd. Type-RL-v2025