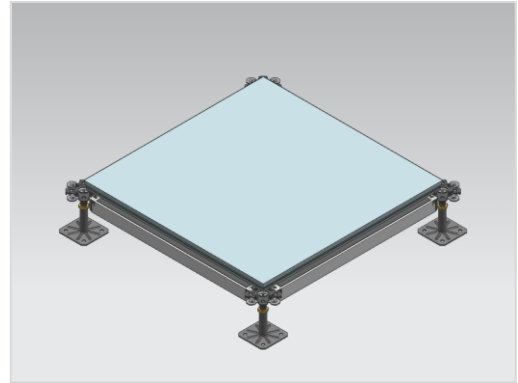


The system floor pedestal type M3 from galvanized steel in combination with gaskets and optionally stringers type RO, RL and RM is used as substructure with raised access floor systems. The system floor pedestals are entirely made by Rhino, from the design to the production including galvanization.

The system floor pedestal type M3 creates the cavity for taking up installations. The system floor pedestal type M3 offers exceptional flexibility by its high loadability and the high adjustment range. The pedestals are infinitely adjustable on height and can therefore take up irregularities of the subfloor.

- Unique flexibility
- High loadability
- Easy installation
- High corrosion protection
- Zinc-whisker free
- Can be combined with stringer type RO, RL and RM flexibility



TECHNICAL DETAILS

Upper pedestal part

Head plate	80 x 80 mm
Thickness	3.0 mm
Threaded bolt	M16

Lower pedestal part

Foot plate	90 x 90 mm
Thickness	3.0 mm
Tube (FFH 80 - 600 mm)	Ø 20 x 2.0 mm

STATIC

Ultimate load centric	≥ 27 kN
-----------------------	---------

CORROSION PROTECTION

Corrosion protection class	Galvanized & blue passivated
Salt spray fog test	72 hours

PEDESTAL VARIANTS

FFH	Part number	Adjustment range
80 mm (HILTI customized)	M3-M16-80	70 - 110 mm
90 mm (HILTI customized)	M3-M16-90	80 - 120 mm
100 mm (HILTI customized)	M3-M16-100	90 - 130 mm
150 mm	M3-M16-150	125 - 175 mm
200 mm	M3-M16-200	175 - 225 mm
250 mm	M3-M16-250	225 - 275 mm
300 mm	M3-M16-300	275 - 325 mm
350 mm	M3-M16-350	325 - 375 mm
400 mm	M3-M16-400	375 - 425 mm
450 mm	M3-M16-450	425 - 475 mm
500 mm	M3-M16-500	475 - 525 mm
550 mm	M3-M16-550	525 - 575 mm
600 mm	M3-M16-600	575 - 625 mm

FFH (Finished Floor Height) = floor tile + pedestal

Factory

2 Jishan Road, Jiangyin
Wuxi 214445
China
Phone +86 519 8988 3171
Fax +86 519 8988 3901
Info@RhinoAccessFloors.com
www.RhinoAccessFloors.com

Headquarters

593, Tongjiang Road | Jintian Plaza 828-830
Changzhou 213022 | Jiangsu, China
Managing Director:
Mr. Zhongchun Dai
Mobile: +86 159 6141 2270
Commercial Reg. No. 91320411564348344J
VAT Reg. No. 91320411564348344J

Banks:

Bank of China, Changzhou New Area Branch
Tianan Industrial Village | Changzhou Xinbei | Jiangsu | China
IBAN: 475458232608, Swift BIC: BKCHCNBJ95E
Agricultural Bank of China, Head Office, P.R. China
311 Tongjiang Middle Road | Changzhou | Jiangsu | China
IBAN: 10615114040014207, Swift BIC: ABOCCNBJ