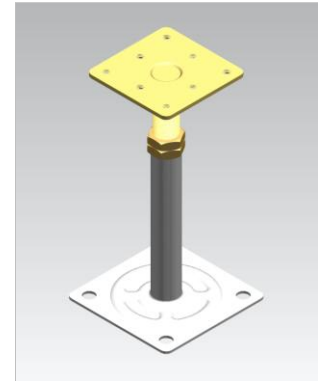


The system floor pedestal type SSP202 M20 from galvanized steel in combination with gaskets and optionally stringer type RSL600 is used as substructure with raised access floor systems. The system floor pedestals are entirely made by Rhino, from the design to the production including galvanization.

The system floor pedestal type SSP202 M20 creates the cavity for taking up installations. The system floor pedestal type SSP202 M20 offers exceptional flexibility by its high loadability and the high adjustment range. The pedestals are infinitely adjustable on height and can therefore take up irregularities of the subfloor.

- Unique flexibility
- High loadability
- Easy installation
- High corrosion protection
- Zinc-whisker free
- Can be combined with stringer type RSL600, RSL1200



TECHNICAL DETAILS

Upper pedestal part	
Head plate	76 x 76 mm
Thickness	4.0 mm
Threaded bolt	M20
Lower pedestal part	
Foot plate	90 x 90 mm / 120 x 120 mm
Thickness	3.0 mm
Tube (FFH 150 - 900 mm)	Ø 24 x 2.0 mm
Tube (FFH 600 - 1200 mm)	Ø 25 x 2.5 mm
Tube (FFH 900 - 1500 mm)	Ø 26 x 3.0 mm

STATIC

Ultimate load centric	≥ 30 kN
-----------------------	---------

CORROSION PROTECTION

Corrosion protection class	Galvanized & blue passivated
Salt spray fog test	72 hours

PEDESTAL VARIANTS

FFH	Part number	Adjustment range
150 mm	SSP202-M20-150	125 - 175 mm
300 mm	SSP202-M20-300	275 - 325 mm
400 mm	SSP202-M20-400	375 - 425 mm
500 mm	SSP202-M20-500	475 - 525 mm
600 mm	SSP202-M20-600	570 - 630 mm
700 mm	SSP202-M20-700	670 - 730 mm
800 mm	SSP202-M20-800	770 - 830 mm
900 mm	SSP202-M20-900	870 - 930 mm
1000 mm	SSP202-M20-1000	960 - 1040 mm
1200 mm	SSP202-M20-1200	1160 - 1240 mm
1500 mm	SSP202-M20-1500	1450 - 1550 mm

FFH (Finished Floor Height) = floor tile + pedestal

We reserve the right to change specification or design and supply products which may differ from those described and illustrated without notice and without liability. ©2010-2025 Rhino Technologies Co., Ltd. SSP202-M20-v2025