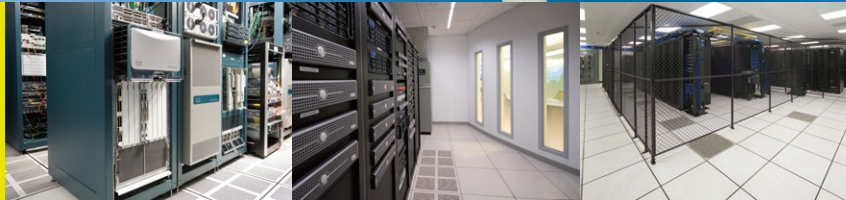




RhinoAlutec®
Aluminum Solid Panel



ALS 1000/1250/1500

Aluminum Solid Panel

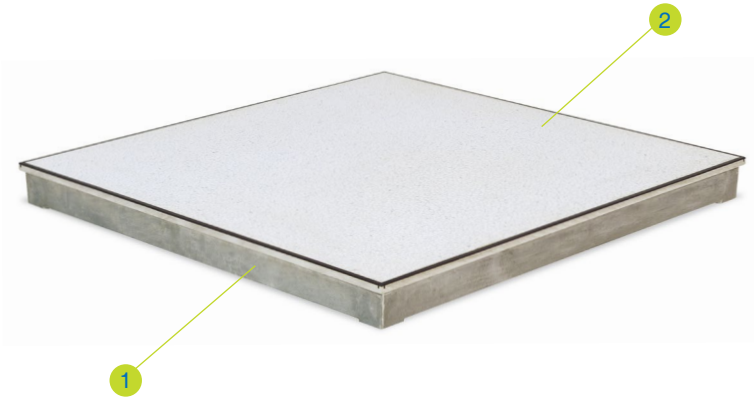
RhinoAlutec® aluminum solid panels are specifically designed for the areas inside clean rooms where extremely heavy equipments are installed. The unique lattice structure of Rhino's solid panel allows for excellent weight dispersion. Non-ferrous, precision-machined and lightweight, these panels offer ease-of-handling and a tight, precise fit.

RHINO®
Strive for perfection!

Technical Data Sheet

RhinoAlutec® Solid

Panel



1 Aluminum Solid Panel

Size: 600x600mm
Thickness: 50/55mm
Material: Aluminum Alloy

2 Top layer

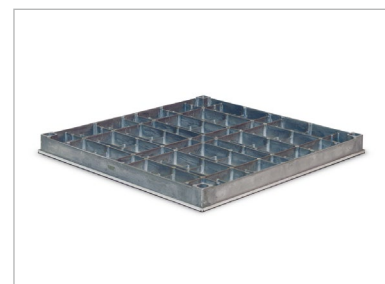
Thickness: Various
Material: HPL/ESD vinyl (PVC)

Description

RhinoAlutec® aluminum solid panels are specifically designed for the areas inside clean rooms where extremely heavy equipments are installed. The unique lattice structure of Rhino's solid panel allows for excellent weight dispersion. Non-ferrous, precision-machined and lightweight, these panels offer ease-of-handling and a tight, precise fit.

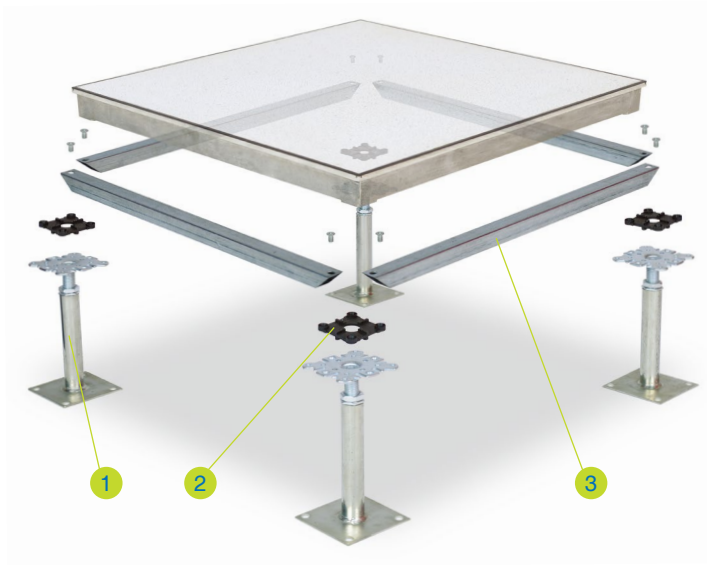
Features

- Anti-corrosion and anti-magnetic
- Impressive acoustic performance
- Superb underfoot comfort
- Light weight and high loading capacity
- Low air leakage rate
- Wide range of covering options



Panel Type	Panel Size	Core Material	Panel Construction	Panel Thickness (Nominal)	System Weight (Typical)
ALS 1000	600mm square	Aluminum Alloy	Precision-machined top with various finish	50/55 mm	33.85 Kg/m ²
ALS 1250	600mm square	Aluminum Alloy	Precision-machined top with various finish	50/55 mm	36.63 Kg/m ²
ALS 1500	600mm square	Aluminum Alloy	Precision-machined top with various finish	50/55 mm	39.41 Kg/m ²

System



1 Standard Pedestal
Hot-dip galvanized steel made pedestal is suitable for raised floors with a finished floor height from 150mm to 1800mm.
Material: Steel, Hot-dip galvanized.

2 Head Gasket
Plastic conductive material with sound proofing and sealing functions, equipped with tabs for the positioning of panels.
Thickness: 3.5 mm

3 Stringer
Steel tube performed stringer provide best supports to the structural system with limited air leakage and outstanding acoustic performance.
Dimension: 543mm x 25mm x 25mm
Thickness: 0.8/1.0/1.2mm

Pedestal



- 1 Head Assembly**
Head plate: 90mm x 90mm x 3.0mm
Threaded rod: M18
- 2 Adjusting Nut**
M18
- 3 Base Tube**
Ø25mm x 2.5mm
- 4 Base Plate**
100mm x 100mm x 2.5mm

Performance

- This rigid grid system is tested in accordance with PSA MOB PS/SPU specification
- Panel deflection at centre edge must not exceed 2.5mm
- Performance to a safety factor of 3 x static load
- Structural performance based upon a full Rhino access floors system i.e. panels & pedestals.



Panel Type	Panel Grade	Concentrated Load		Uniformly Distribution Load	Ultimate Load
		Point Load	Load Over		
		25mm x 25mm square	300mm x 300mm square		
ALS 1000	Heavy Duty	4.50 kN	5.56 kN	12.00 kN/m	13.50 kN
ALS 1250	Extra Heavy Duty	5.56 kN	6.67 kN	16.00 kN/m	16.68 kN
ALS 1500	Industrial Duty	6.67 kN	8.90 kN	20.00 kN/m	20.01 kN

RHINO[®]

Strive for perfection!

Corporate Headquarters

111 S.K.V. Building, 4th Floor
Soi Sansabai, Klongton
Klongtoey, Bangkok 10110
Thailand

T/ (662) 661 2990

F/ (662) 661 2991

China Office

593, Tongjiang Road
Jintian Plaza 828-830
Changzhou 213022
Jiangsu, China

T/ (86) 519 8988 3171

F/ (86) 519 8988 3901

Hong Kong Office

Unit 908, 9/F, LT Tower
31 Chong Yip Street
Kwun Tong, Kowloon
Hong Kong

T/ (852) 2865 6816

F/ (852) 2865 6813

Production Unit

Hengshanqiao
Wujin District
Changzhou 213119
Jiangsu, China

T/ (86) 519 8860 7959

F/ (86) 519 8860 5659

www.RhinoAccessFloors.com