



RhinoAlutec®
Aluminum Perforated Panel



ALP 1000/1250/1500

Aluminum Perforated Panel

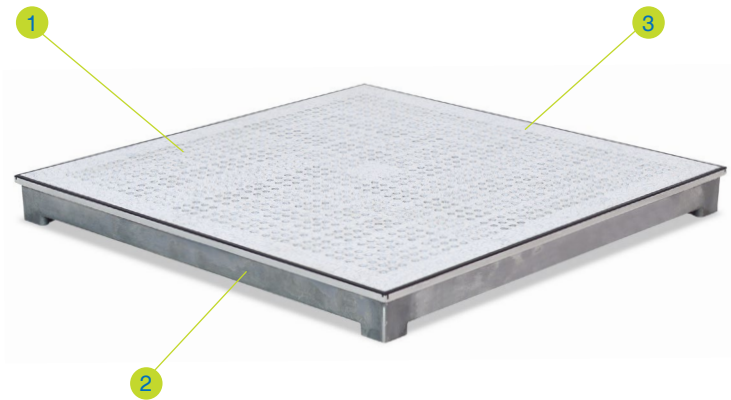
RhinoAlutec® aluminum perforated panel has the same lattice structure design of solid panel, the top of the panel is laminated with anti-static HPL or conductive vinyl, this perforated panel with 1,080 chamfered holes and nominal air open ratios from 17% - 25% are designed to meet specific air flow requirements for both data centers and clean rooms.

RHINO®
Strive for perfection!

Technical Data Sheet

RhinoAlutec® Perforated

Panel



1 Airflow Rates

Rates: 17% - 25%

2 Aluminum Perforated Panel

Size: 600x600mm

Thickness: 50/55mm

Material: Aluminum Alloy

3 Top Layer

Thickness: Various

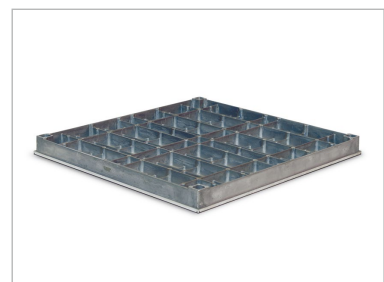
Material: HPL/ESD vinyl (PVC)

Description

RhinoAlutec® aluminum perforated panel has the same lattice structure design of solid panel, the top of the panel is laminated with anti-static HPL or conductive vinyl, this perforated panel with 1,080 chamfered holes and nominal air open ratios from 17% - 25% are designed to meet specific air flow requirements for both data centers and clean rooms.

Features

- Anti-corrosion and anti-magnetic
- Impressive acoustic performance
- Superb underfoot comfort
- Light weight and high load capacity
- Wide range of covering options
- 17% - 25% airflow rates

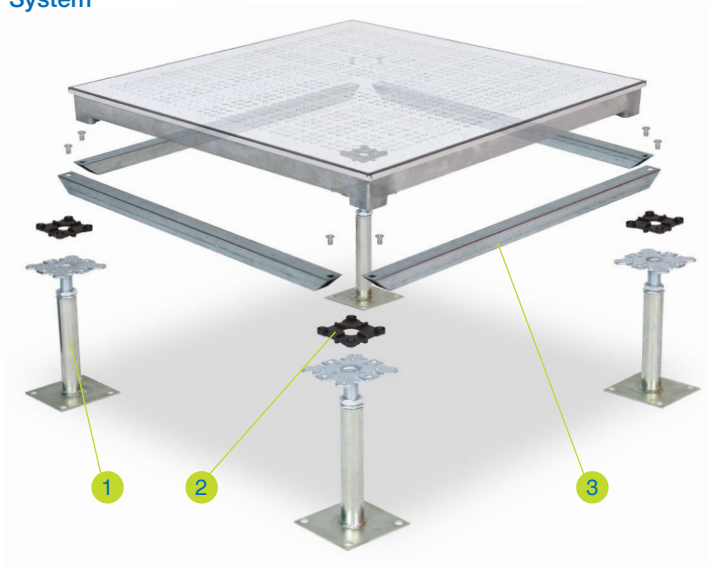


Panel Type	Panel Size	Core Material	Panel Construction	Panel Thickness (Nominal)	System Weight (Typical)
ALP 1000	600mm square	Aluminum Alloy	Precision-machined with perforated and various finish on top	50/55 mm	31.07 Kg/m ²
ALP 1250	600mm square	Aluminum Alloy	Precision-machined with perforated and various finish on top	50/55 mm	33.85 Kg/m ²
ALP 1500	600mm square	Aluminum Alloy	Precision-machined with perforated and various finish on top	50/55 mm	36.63 Kg/m ²

Technical Data Sheet

RhinoAlutec® Perforated

System



1 Standard Pedesta
Hot-dip galvanized steel made pedestal is suitable for raised floors with a finished floor height from 150mm to 1800mm.
Material: Steel, Hot-dip galvanized.

2 Head Gasket
Plastic conductive material with sound proofing and sealing functions, equipped with tabs for the positioning of panels.
Thickness: 3.5 mm

3 Stringer
Steel tube performed stringer provide best supports to the structural system with limited air leakage and outstanding acoustic performance.
Dimension: 543mm x 25mm x 25mm
Thickness: 0.8/1.0/1.2mm

Pedestal



1 Head Assembly
Head plate: 90mm x 90mm x 3.0mm
Threaded rod: M18

2 Adjusting Nut
M18

3 Base Tube
Ø25mm x 2.5mm

4 Base Plate
100mm x 100mm x 2.5mm

Performance

- This rigid grid system is tested in accordance with PSA MOB PS/SPU specification.
- Panel deflection at centre edge must not exceed 2.5mm
- Performance to a safety factor of 3 x static load
- Structural performance based upon a full Rhino access floors system i.e. panels & pedestals.



Panel Type	Panel Grade	Concentrated Load		Uniformly Distribution Load	Ultimate Load
		Point Load	Load Over		
		25mm x 25mm square	300mm x 300mm square		
ALP 1000	Heavy Duty	4.50 kN	5.56 kN	12.00 kN/m ²	13.50 kN
ALP 1250	Extra Heavy Duty	5.56 kN	6.67 kN	16.00 kN/m ²	16.68 kN
ALP 1500	Industrial Duty	6.67 kN	8.90 kN	20.00 kN/m ²	20.01 kN

RHINO[®]

Strive for perfection!

Corporate Headquarters

111 S.K.V. Building, 4th Floor
Soi Sansabai, Klongton
Klongtoey, Bangkok 10110
Thailand

T/ (662) 661 2990

F/ (662) 661 2991

China Office

593, Tongjiang Road
Jintian Plaza 828-830
Changzhou 213022
Jiangsu, China

T/ (86) 519 8988 3171

F/ (86) 519 8988 3901

Hong Kong Office

Unit 908, 9/F, LT Tower
31 Chong Yip Street
Kwun Tong, Kowloon
Hong Kong

T/ (852) 2865 6816

F/ (852) 2865 6813

Production Unit

Hengshanqiao
Wujin District
Changzhou 213119
Jiangsu, China

T/ (86) 519 8860 7959

F/ (86) 519 8860 5659

www.RhinoAccessFloors.com