



Meiah®

High Pressure Laminate (HPL)



Meiah® high-pressure decorative plastic laminate is produced in accordance with the European standard EN 438 Class W2. Rhino finds it's an ideal application in floors for which high surface wear is necessary, and finds it's the best use in the construction of access floors which can be installed on all types of floor, whether old or new. The surface of Rhino Meiah® HPL is non-toxic, chemically inert and non-allergenic.

Technical Data Sheet

Meiah® Anti-static HPL



Performance

- Excellent resistance to wear, tear, scratching and impact
- Excellent resistance to damp and static load resistance
- Excellent resistance to high temperatures, including those of cigarette burns
- Excellent reaction to fire with low fume-generation
- Easy to clean and maintenance, good dimensional stability

Colorline 1



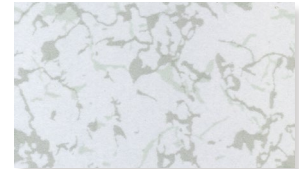
Meiah® 2010



Meiah® 2010-1



Meiah® 2010-2



Meiah® 2010-4



Meiah® 2010-5



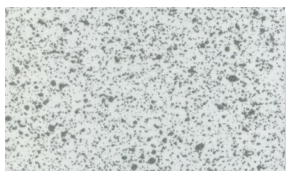
Meiah® 2010-6



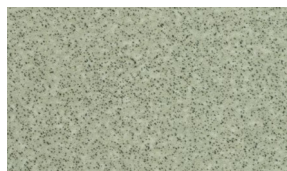
Meiah® 2010-7



Meiah® 2010-8



Meiah® 2103



Meiah® 2158

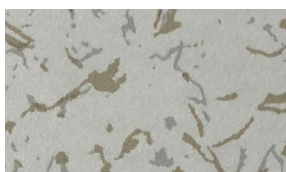


Meiah® 2069



Meiah® 2208

Colorline 2



Meiah® 2201



Meiah® 2201-1



Meiah® 2202



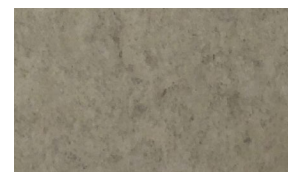
Meiah® 2203



Meiah® 2204



Meiah® 2205



Meiah® 2206



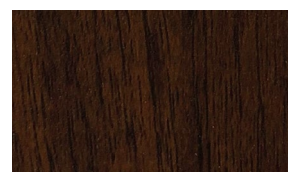
Meiah® 2276



Meiah® 8201



Meiah® 3201



Meiah® 3202



Meiah® 3203

Technical Data Sheet

Meiah® HPL



	Specification	Test Standard	Anti-static High Pressure Laminate
FLOOR CLASSIFICATION	Type of Floor Covering	EN649	Anti-static HPL
		ASTM F 1700	Class III - Type B, High Pressure Laminate
		NFPA Life sfty code 101	Class 1 - Interior Floor Finish
		NFPA 99 Standard for health care facility	Meets Standard
	Wear rating / Static load resistance	EN 685	Commercial: 34 / Industrial: 43
	No of Color		24
PHYSICAL FEATURES	Tile Dimension Size	EN 427 90° Press Cutting	600x600 / 610x610
		ASTM F 536: Size Tolerance (<±0.4mm / 305mm)	< ±0.4mm / 305mm
	Dimensional Stability	EN 434 /FED STD NO. 501a, M 6211	< 0.25%
		ASTM F 540: Square Tolerance (<0.51mm / 305mm)	< 0.51mm / 305mm
	Wear Layer Thickness	EN 429	0.30mm
	Inter Layer		Print film
	Total Thickness	EN 428	Metric: 1.2mm / 2.0mm English: 1/16"(1.6mm) / 1/8"(3.2mm)
		ASTM F 386: Thickness Tolerance (±0.13mm)	Meets Standa
	Weight / m²	EN 430	1.2mm: 1.5 kg/m²; 2.0mm: 2.5 kg/m² 1.6mm: 1.8 kg/m²; 3.2mm: 3.6 kg/m²
	Wear Resistance (Abrasion / Thickness Loss)	EN 660-1	< 0.08mm
		EN 649	Group T
		ASTM D 4060 (CS-17 Wheel, 1,000 g, 1,000 cycles)	70mg
	Hardness	ASTM D 2240 (Type D)	67
	Residual indentation	EN 433 / Din 51955	<0.04mm
		ASTM F 1914 (<8%)	<8%
	Static Load Limit	ASTM F 970	3,000 lbs/square inch; Long term
Flexibility	ASTM F 137	No Crack or Breaking	
Castors Wheel test	EN 425	No Damage	
ELECTRICAL FEATURES	Electrical Resistance	DIN 51953 / EN 1081	Anti-static 10 ⁹ < R < 10 ¹²
		ASTM F 150 / ESD F 7.1 / UL 779	Anti-static 1.0x10 ⁹ ~ 1.0x10 ¹²
FIRE RESISTANCE	Critical Radiant Flux	ASTM E 648 / NFPA 253	Class 1 (1.08 w/cm²)
	Flame Spread	ASTM E 162 / ASTM E 84 / NFPA 225	NFPA Class B / UBC Class II (<75)
	Smoke Density	ASTM E 662 / NFPA 258	Passed (<450Dme)
	Thermal Conductivity	DIN 52612 / NFX 10021	0.309 w/m.k
	Underfloor Heating	DIN 52612	Suitable - Max 30C
ASTM F 1514 (ΔE < 8 ave, max)		< ΔE = 8.0	
CHEMICAL RESISTANCE	Chemical Resistance	EN 423 / DIN 51958	Excellent; Test Report available on request
		ASTM D 543 / ASTM F 925	Excellent; Test Report available on request
SLIP RESISTANCE	Slip Resistance	Wet	
		DIN 51130 / BGR181 (ZH1 / 571)	R9
		ADA Requirements	> 0.6
	prEN 13893	0.89 μ	
	Dry	EN 13893	> 0.3
LIGHT RESISTANCE	Color Fastness	EN 20105-B 02	> 6
		ISO 105 B 02, Met. 3 - DIN53389	7
	Resistance to Light	ASTM F 1515 (ΔE<8 ave, max)	< ΔE = 8.0
OTHER PROPERTIES	Impact Sound Reduction	ISO 717 / 2	4 dB
	Sound Absorption	ISO 140-8 / ISO 717	3 dB
	Water Absorption	ASTM D 570	0.03% water weight gain
	Ease of Decontamination	DIN 25415-1 / ISO 8690	Excellent
	Recyclable		Yes
	Formulation		High Pressure Laminate Static Control HPL

We reserve the right to change specification or design and supply products which may differ from those described and illustrated without notice and without liability. © 2010-2023 Rhino Technologies Co., Ltd.



Corporate Headquarters

111 S.K.V. Building, 4th Floor
Soi Sansabai, Klongton
Klongtoey, Bangkok 10110
Thailand

T/ (662) 661 2990

F/ (662) 661 2991

China Office

593, Tongjiang Road
Jintian Plaza 828-830
Changzhou 213022
Jiangsu, China

T/ (86) 519 8988 3171

F/ (86) 519 8988 3901

Hong Kong Office

Unit 908, 9/F, LT Tower
31 Chong Yip Street
Kwun Tong, Kowloon
Hong Kong

T/ (852) 2865 6816

F/ (852) 2865 6813

Production Unit

Hengshanqiao
Wujin District
Changzhou 213119
Jiangsu, China

T/ (86) 519 8860 7959

F/ (86) 519 8860 5659

www.RhinoAccessFloors.com