



RhinoCross®
Low-profile Access Flooring



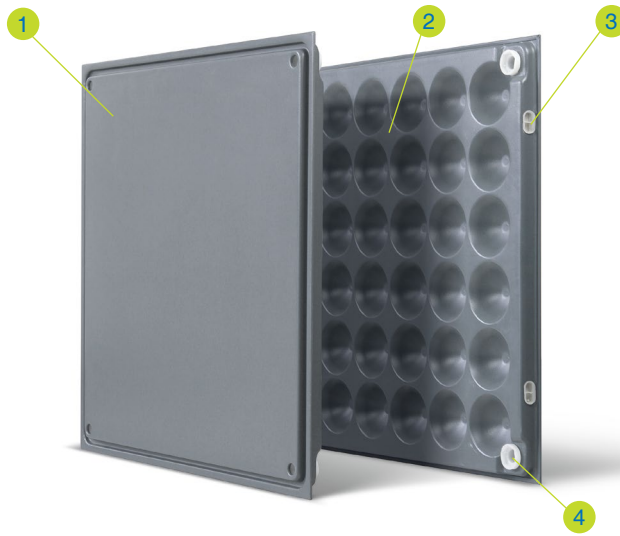
CL 501/502

Channel System

RhinoCross® channel system consists of a floor tile interlocking with side cover plates and corner cover plates along with galvanized steel formed cable trays. It is height adjustable from 35mm to 100mm. The panel is made of high quality steel plates which are press-formed and filled with bubble cement, then sprayed with powder coat epoxy finish. Zinc-plated height-adjustable pedestals are self locking and range in height from 35mm to 100mm. Grooved cover plates are interlocked and kept all components are in place. Symmetrical concave design distributes loads evenly.

RHINO®
Strive for perfection!

Panel



- 1 Top Steel-plate**
Thickness: Various
Material: Cold rolled steel (SPCC)
- 2 Bottom Shell**
Material: Cold rolled steel (ST14)
Construction: Classic 36-dome design
- 3 Cement Injection**
Material: Light weight cement filled
Seal: Plastic
- 4 Pedestal Support**
Material: Plastic

Description

RhinoCross® channel system consists of a floor tile interlocking with side cover plates and corner cover plates along with galvanized steel formed cable trays. It is height adjustable from 35mm to 100mm. The panel is made of high quality steel plates which are press-formed and filled with bubble cement, then sprayed with powder coat epoxy finish. Zinc-plated height-adjustable pedestals are self locking and range in height from 35mm to 100mm. Grooved cover plates are interlocked and kept all components are in place. Symmetrical concave design distributes loads evenly.

Features

- Low-profile height adjustable 35-100mm
- Quick connect channel system
- Organized channels for high volume cable management
- Save time and expense for facility re-configurations
- Eliminate electrified furnishings, save costs on moves or changes, improved esthetics

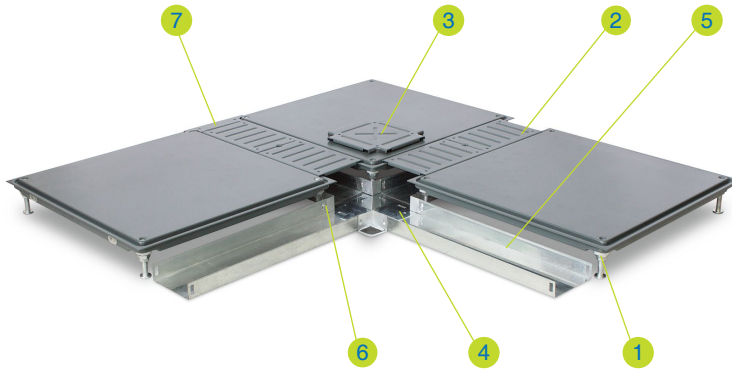


Panel Type	Panel Size	Core Material	Panel Construction	Panel Thickness (Nominal)	System Weight (Typical)
CL 501	500mm square	Light weight cement-filled	Cold rolled steel resistance welded	25.00 mm	35.19 kg/m ²
CL 502	500mm square	Light weight cement-filled	Cold rolled steel resistance welded	26.00 mm	36.58 kg/m ²

Technical Data Sheet

RhinoCross® Channel

System



- 1 Pedestal**
Electra-galvanized steel made bolt pedestal is suitable for raised floors with a finished floor height from 35mm to 100mm.
- 2 Channel Plate**
2.0mm thick high quality steel made and powder coat epoxy finish with 5 ribs providing outstanding load bearing capacity.
- 3 Corner Plate**
2.0mm thick high quality steel made and powder coat epoxy finish with 4 ribs around and a cross ribs at the center providing outstanding load bearing capacity.
- 4 Soleplate**
0.5mm thick high quality galvanized steel made with 4 round holes at the corner for pedestal location.
- 5 Cable Tray**
0.5mm thick high quality galvanized steel made groove design for cable management.
- 6 Connector**
0.3mm thick high quality galvanized steel made right-angle design protected pedestals during cable management.
- 7 Perimeter Cover Plate**
2.0mm thick high quality steel made and powder coat epoxy finish.

Pedestal



- 1 Adjust From Top**
By flat head screw driver
- 2 Countersunk Nut**
Knock into tiles by a rubber hammer
- 3 Bolt Stud**
M12
- 4 Bolt-type Pedestal**
M12 Bolt stud
H = 35-100mm

Performance

- This low-profile channel system is tested in accordance with PSA MOB PS/SPU specification.
- Panel deflection at centre edge must not exceed 2.5mm
- Performance to a safety factor of 3 x static load
- Structural performance based upon a full Rhino access floors system i.e. panels & pedestals.



Panel Type	Panel Grade	Concentrated Load		Uniformly Distribution Load	Ultimate Load
		Point Load	Load Over		
		25mm × 25mm square	300mm × 300mm square		
CL 501	Medium Duty	3.00 kN	4.50 kN	8.00 kN/m ²	9.00 kN
CL 502	Heavy Duty	4.50 kN	5.56 kN	12.00 kN/m ²	13.50 kN

RHINO[®]

Strive for perfection!

Corporate Headquarters

111 S.K.V. Building, 4th Floor
Soi Sansabai, Klongton
Klongtoey, Bangkok 10110
Thailand

T/ (662) 661 2990

F/ (662) 661 2991

China Office

593, Tongjiang Road
Jintian Plaza 828-830
Changzhou 213022
Jiangsu, China

T/ (86) 519 8988 3171

F/ (86) 519 8988 3901

Hong Kong Office

Unit 908, 9/F, LT Tower
31 Chong Yip Street
Kwun Tong, Kowloon
Hong Kong

T/ (852) 2865 6816

F/ (852) 2865 6813

Production Unit

Hengshanqiao
Wujin District
Changzhou 213119
Jiangsu, China

T/ (86) 519 8860 7959

F/ (86) 519 8860 5659

www.RhinoAccessFloors.com