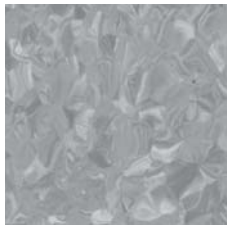




DecorLux® HI Homogeneous

Material Data Sheet

Color Line



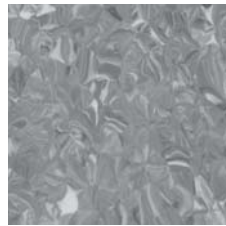
HI-7321



HI-7317



HI-7309



HI-7322



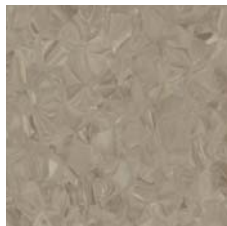
HI-7318



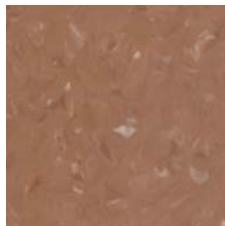
HI-7310



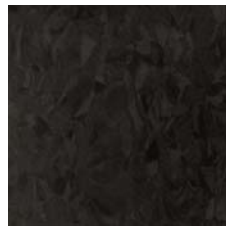
HI-7323



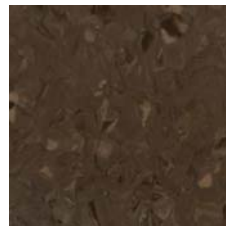
HI-7319



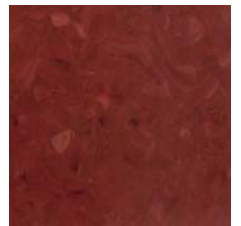
HI-7314



HI-7324



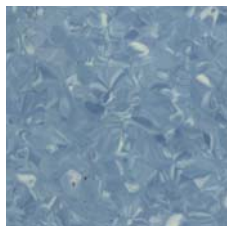
HI-7320



HI-7316



HI-7313



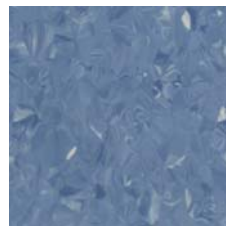
HI-7301



HI-7305



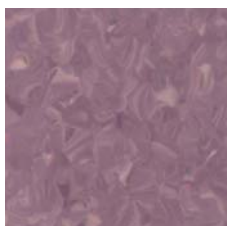
HI-7311



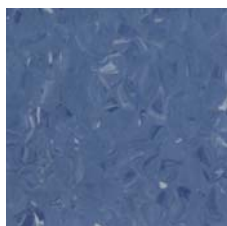
HI-7315



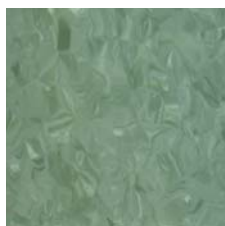
HI-7306



HI-7312



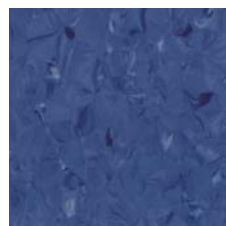
HI-7302



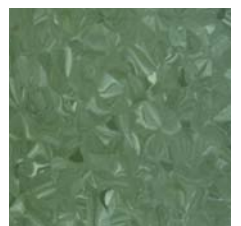
HI-7307



HI-7304



HI-7303



HI-7308



DecorLux® HI Homogeneous

Material Data Sheet

DESCRIPTION

Total thickness	EN 428	mm	2.0/2.5/3.0
Weight	EN 430	g/m ²	2900/3600/4300
Width of sheet	EN 426	cm	200
Length of sheet	EN 426	lm	20/15/10

CLASSIFICATION

Norm/Product specification	-	-	EN 685
European classification	EN 649	class	34-43
K rating	-	class	K5
	EN 13501-1	class	B _{f1-s1}
Fire rating	DIN 4102	-	B1
	GB8624-2006	-	GB 8624 B _{f1-s1}
Toxic testing	GB 18586-2001	-	
Static electrical propensity	EN 1815	KV	<2
Electrical resistance	EN 1081	Ω	≥10 ⁹⁻¹⁰
Slip resistance dry	EN 13893	-	≥0.3
Slip resistance dry	DIN 51 130	class	R9

PERFORMANCE

Abrasion resistance	EN 660.1	mm	≤0.15
Abrasion group	EN 649	Group	P
Dimensional stability	EN 434	%	≤0.4
Residual indentation	EN 433	mm	0.04
Thermal conductivity	EN 12 524	W(m.K)	0.25
Colour fastness	EN20 105 - B02	Degree	≥6
Chemical products resistance	EN 423	-	OK
Anti-bacterial and fungicidal	-	-	OK
Special maintenance treatment	-	-	PUR
Color reference	-	-	24



DecorLux® HD Homogeneous

Material Data Sheet

Color Line



HD-6301



HD-6306



HD-6307



HD-6302



HD-6309



HD-6312



HD-6303



HD-6311



HD-6313



HD-6308



HD-6310



HD-6314



HD-6319



HD-6315



HD-6321



HD-6320



HD-6316



HD-6322



HD-6304



HD-6317



HD-6323



HD-6305



HD-6318



DecorLux® HD Homogeneous

Material Data Sheet

DESCRIPTION

Total thickness	EN 428	mm	2.0/2.5/3.0
Weight	EN 430	g/m ²	2900/3600/4300
Width of sheet	EN 426	cm	200
Length of sheet	EN 426	lm	20/15/10

CLASSIFICATION

Norm/Product specification	-	-	EN 685
European classification	EN 649	class	34-43
K rating	-	class	K5
	EN 13501-1	class	B _{fl-s1}
Fire rating	DIN 4102	-	B1
	GB8624-2006	-	GB 8624 B _{fl-s1}
Toxic testing	GB 18586-2001	-	
Static electrical propensity	EN 1815	KV	<2
Electrical resistance	EN 1081	Ω	≥10 ⁹⁻¹⁰
Slip resistance dry	EN 13893	-	≥0.3
Slip resistance dry	DIN 51 130	class	R9

PERFORMANCE

Abrasion resistance	EN 660.1	mm	≤0.15
Abrasion group	EN 649	Group	P
Dimensional stability	EN 434	%	≤0.4
Residual indentation	EN 433	mm	0.04
Thermal conductivity	EN 12 524	W(m.K)	0.25
Colour fastness	EN20 105 - B02	Degree	≥6
Chemical products resistance	EN 423	-	OK
Anti-bacterial and fungicidal	-	-	OK
Special maintenance treatment	-	-	PUR
Color reference	-	-	24



DecorLux® HT2.0 Heterogeneous

Material Data Sheet

Color Line



RL-5501



RL-5505



RL-5504



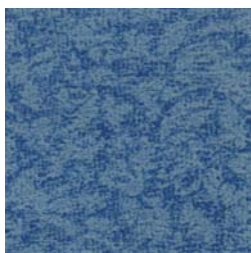
RL-5502



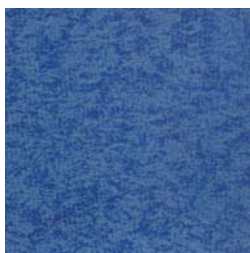
RL-5507



RL-5511



RL-5510



RL-5512



RL-601



RL-613



RL-603



RL-610



RL-612



RL-602



RL-609



RL-604



RL-606



RL-605



RL-607



RL-611



DecorLux® HT2.0 Heterogeneous

Material Data Sheet

DESCRIPTION

Total thickness	EN 428	mm	2.0
Wear layer thickness	En 429	mm	0.4
Weight	EN 430	g/m ²	2300/2500
Width of sheet	EN 426	cm	200
Length of sheet	EN 426	lm	20

CLASSIFICATION

Fire rating	DIN 4102	-	B1
	GB8624-2006	-	GB 8624 B _{fl-s1}
Toxic testing	GB 18586-2001	-	
Static electrical propensity	EN 1815	KV	<2
Slip resistance dry	EN 13893	-	≥0.3
Slip resistance dry	DIN 51 130	class	R9

PERFORMANCE

Abrasion group	EN 649	Group	P
Dimensional stability	EN 434	%	≤0.4
Residual indentation	EN 433	mm	0.04
Flexibility	EN 435	-	Excellent
Colour fastness	EN20 105 - B02	Degree	≥6
Chemical products resistance	EN 423	-	OK
Surface treatment	-	-	UV
Impact sound reduction	EN ISO 717/2	-	Approx. + 4 dB
Indentation	EN433	mm	Approx. 0.04
Hygiene treatment	MRSA	-	Very good
Castor wheel test	EN425	-	Suitable



DecorLux® HT3.0 Heterogeneous

Material Data Sheet

Color Line



RL-801



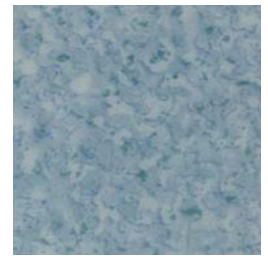
RL-804



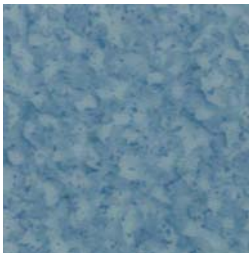
RL-802



RL-809



RL-808



RL-807



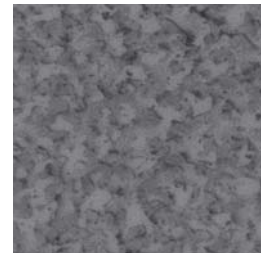
RL-806



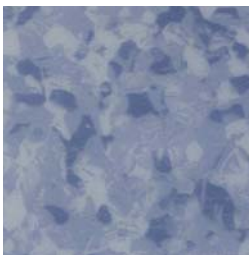
RL-805



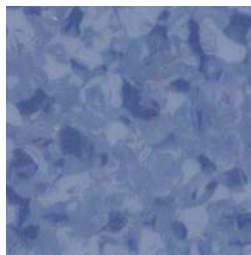
RL-810



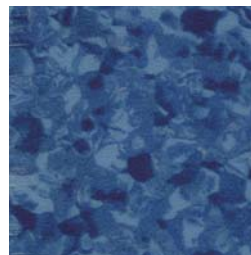
RL-812



RL-103



RL-105



RL-101



RL-104



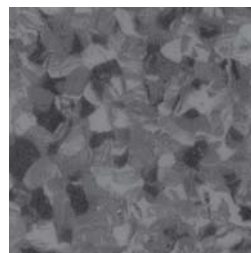
RL-107



RL-109



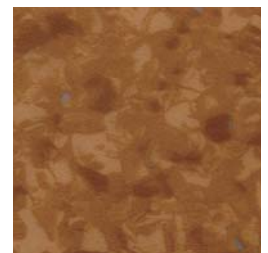
RL-106



RL-108



RL-111



RL-113



DecorLux® HT3.0 Heterogeneous

Material Data Sheet

DESCRIPTION

Total thickness	EN 428	mm	3.0
Wear layer thickness	En 429	mm	0.5
Weight	EN 430	g/m ²	2800/3200
Width of sheet	EN 426	cm	200
Length of sheet	EN 426	lm	15

CLASSIFICATION

Fire rating	DIN 4102	-	B1
	GB8624-2006	-	GB 8624 B _{fl-s1}
Toxic testing	GB 18586-2001	-	
Static electrical propensity	EN 1815	KV	<2
Slip resistance dry	EN 13893	-	≥0.3
Slip resistance dry	DIN 51 130	class	R9

PERFORMANCE

Abrasion group	EN 649	Group	P
Dimensional stability	EN 434	%	≤0.4
Residual indentation	EN 433	mm	0.04
Flexibility	EN 435	-	Excellent
Colour fastness	EN20 105 - B02	Degree	≥6
Chemical products resistance	EN 423	-	OK
Surface treatment	-	-	UV
Impact sound reduction	EN ISO 717/2	-	Approx. + 4 dB
Indentation	EN433	mm	Approx. 0.04
Hygiene treatment	MRSA	-	Very good
Castor wheel test	EN425	-	Suitable



Color Line

DecorLux® Linoleum

Material Data Sheet



RL 62-2795



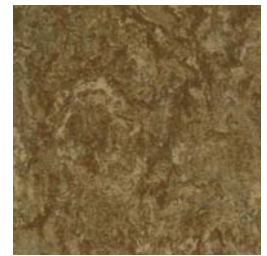
RL 62-3146



RL 62-3123



RL 62-3038



RL 62-3233



RL 62-3231



RL 62-3075



RL 62-3235



RL 62-3230



RL 62-3125



RL 62-3139



RL 62-3131



RL 62-3137



RL 62-3048



RL 62-3055



RL 62-3182



RL 62-3224



RL 62-3205



RL 62-3030



RL 62-3223



DecorLux® Linoleum

Material Data Sheet

DESCRIPTION

Type of flooring		Homogeneous	EN 649
Material		Linseed oil and retinol with jute	

GENERAL PROPERTIES

Overall Thickness	mm	2.0/2.5/3.2	EN 428
Weight	kgs	2.4/2.9/	
Width	cm	200	EN 426
Length/R	m	32	EN 426
Diameter	cm	30/40/50	EN 435
Abrasion Resistance class	class	23	EN 685
Abrasion Resistance class	class	32	EN 685
Abrasion Resistance class	class	41	EN 685

SAFETY CRITERIA

Flamme Retardant	class	Bfl-s1	EN13501-1
Resistance to cigarette butts	class	Excellent	EN 1399
Resistance to chemicals		Resistance to acid & alkali and tincture of iodine	EN-ISO 26987
Slip Resistance	class	R9	DIN 51130
Sound Insulation	dB	4dB/5dB/6dB/7dB	EN ISO 717-2
Thermal conductivity	W/M.K	≈0.17	EN 12524
Dirt resistance		Against acid/fat/oil such as ethanol/ acetone	EN 423



Color Line

DecorLux® Carpet Grain
Material Data Sheet



HCF8004-3



HCF1017



HCF1025



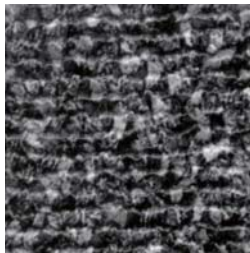
HCF8146-3



HCF8054



HCF8054-1



HCF8054-4



HCF8054-2



HCF8094



HCF8095



DecorLux® Carpet Grain

Material Data Sheet

Features:

New fashioned & non-polluted ground decorative material multilayer, pressure resistant, wear resistant and antiseptic.

Application:

It has a good decoration effect and it can be widely used for shopping center, super market, school, hospital, office building, etc.

Specification:

Size: 457.2 x 457.2mm (18" x 18"); 600 x 600mm; 610 x 610mm

Wear layer: 0.07mm; 0.10mm; 0.20mm; 0.30mm; 0.50mm

Thickness: 2.0mm; 2.5mm; 3.0mm; 5.0mm

Item	Rate of size change at heating	Sunken Rate at 23 ⁰ C	Sunken Rate at 45 ⁰ C	Residual Indentation	Amount of wear	Combustion property
Standard	GB4085-83	GB4085-83	GB4085-83	GB4085-83	GB4085-83	GB4085-83
	SJ/T11236-2001	SJ/T11236-2001	SJ/T11236-2001	SJ/T11236-2001	SJ/T11236-2001	FV-O SJ/T11236-2001
Index	≤0.20mm	≤0.30mm	≤0.60mm	≤0.15%	≤0.02g/cm ²	≤10s

Anti Corrosion:

HCL	ok	NaOH aqueous solution	ok
Alcohol	ok	Gasoline	ok
Acetone	ok	Ordinal detergent	ok

Brief Introduction to Installation:

1. The requirements of foundation

- 1) The ground should be waterstone ground, ceramic tile ground, wooden ground or cement ground.
- 2) The ground should be smooth and flat. Its unflatness should be less than 0.2%.
- 3) The ground should have enough strength and no surface dusting and separation phenomenon.
- 4) The ground should be dry. It needs 30 days for the new ground to become dry.

2. Procedure of installation

Clean the ground→Coat adhesive→Lay floor→Cleaning

3. Maintenance of floor

- 1) It is not permitted that the sharp and rough heavy matters scribe and drag on the surface of floor and that personnel who wear shoes with nails walk on the floor. The floor should be kept clean and dry.
- 2) It is not permitted that the chairs which have black rubber cushion put on the floor in order to avoid black sulfide polluting its surface.
- 3) If there is oil or dirty things on its surface, it may be cleaned with detergent. If there is scribed sign, it can be recovered by fine abrasive paper.
- 4) If there is heavy oil and dirty caused by installation, our factory has special washer to clean them.



DecorLux® Wood Grain

Material Data Sheet

Color Line



HCF7141



HCF7328-2



HCF7142



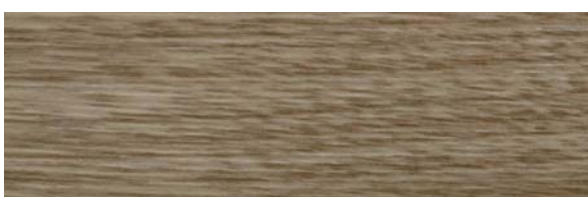
HCF7020



HCF7143-2



HCF7234-1



HCF7102



HCF7242-3



HCF7101



HCF7234-14



DecorLux® Wood Grain

Material Data Sheet

Features:

New fashioned & non-polluted ground decorative material multilayer, pressure resistant, wear resistant and antiseptic.

Application:

It has a good decoration effect and it can be widely used for shopping center, super market, school, hospital, office building, etc.

Specification:

Size: 152.4 x 914.4mm (6" x 36"); 152.4 x 1219.2mm (6" x 48")

Wear layer: 0.07mm; 0.10mm; 0.20mm; 0.30mm; 0.50mm

Thickness: 2.0mm; 2.5mm; 3.0mm; 5.0mm

Item	Rate of size change at heating	Sunken Rate at 23 ^o C	Sunken Rate at 45 ^o C	Residual Indentation	Amount of wear	Combustion property
Standard	GB4085-83	GB4085-83	GB4085-83	GB4085-83	GB4085-83	GB4085-83
	SJ/T11236-2001	SJ/T11236-2001	SJ/T11236-2001	SJ/T11236-2001	SJ/T11236-2001	FV-O SJ/T11236-2001
Index	≤0.20mm	≤0.30mm	≤0.60mm	≤0.15%	≤0.02g/cm ²	≤10s

Anti Corrosion:

HCL	ok	NaOH aqueous solution	ok
Alcohol	ok	Gasoline	ok
Acetone	ok	Ordinal detergent	ok

Brief Introduction to Installation:

1. The requirements of foundation

- 1) The ground should be waterstone ground, ceramic tile ground, wooden ground or cement ground.
- 2) The ground should be smooth and flat. Its unflatness should be less than 0.2%.
- 3) The ground should have enough strength and no surface dusting and separation phenomenon.
- 4) The ground should be dry. It needs 30 days for the new ground to become dry.

2. Procedure of installation

Clean the ground→Coat adhesive→Lay floor→Cleaning

3. Maintenance of floor

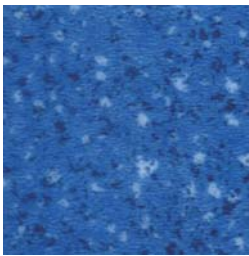
- 1) It is not permitted that the sharp and rough heavy matters scribe and drag on the surface of floor and that personnel who wear shoes with nails walk on the floor. The floor should be kept clean and dry.
- 2) It is not permitted that the chairs which have black rubber cushion put on the floor in order to avoid black sulfide polluting its surface.
- 3) If there is oil or dirty things on its surface, it may be cleaned with detergent. If there is scribed sign, it can be recovered by fine abrasive paper.
- 4) If there is heavy oil and dirty caused by installation, our factory has special washer to clean them.



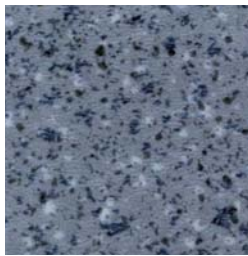
Color Line

DecorLux® Stone Grain

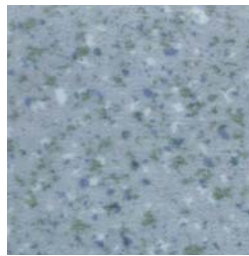
Material Data Sheet



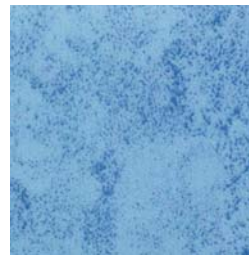
HCF1002



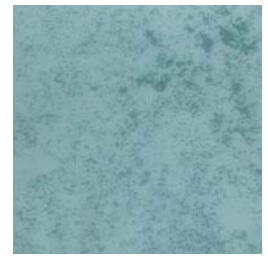
HCF1003



HCF1005



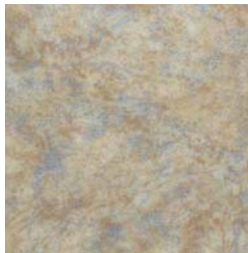
HCF2172-21



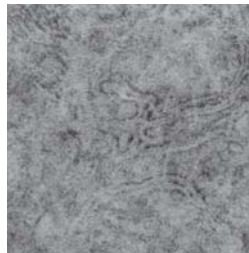
HCF2172-19



HCF8913



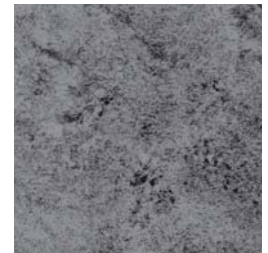
HCF2195-1



HCF2195-3



HCF2172-18



HCF2172-3



DecorLux® Stone Grain

Material Data Sheet

Features:

New fashioned & non-polluted ground decorative material multilayer, pressure resistant, wear resistant and antiseptic.

Application:

It has a good decoration effect and it can be widely used for shopping center, super market, school, hospital, office building, etc.

Specification:

Size: 457.2 x 457.2mm (18" x 18"); 600 x 600mm; 610 x 610mm

Wear layer: 0.07mm; 0.10mm; 0.20mm; 0.30mm; 0.50mm

Thickness: 2.0mm; 2.5mm; 3.0mm; 5.0mm

Item	Rate of size change at heating	Sunken Rate at 23 ^o C	Sunken Rate at 45 ^o C	Residual Indentation	Amount of wear	Combustion property
Standard	GB4085-83 SJ/T11236-2001	GB4085-83 SJ/T11236-2001	GB4085-83 SJ/T11236-2001	GB4085-83 SJ/T11236-2001	GB4085-83 SJ/T11236-2001	GB4085-83 FV-O SJ/T11236-2001
Index	≤0.20mm	≤0.30mm	≤0.60mm	≤0.15%	≤0.02g/cm ²	≤10s

Anti Corrosion:

HCL	ok	NaOH aqueous solution	ok
Alcohol	ok	Gasoline	ok
Acetone	ok	Ordinal detergent	ok

Brief Introduction to Installation:

1. The requirements of foundation

- 1) The ground should be waterstone ground, ceramic tile ground, wooden ground or cement ground.
- 2) The ground should be smooth and flat. Its unflatness should be less than 0.2%.
- 3) The ground should have enough strength and no surface dusting and separation phenomenon.
- 4) The ground should be dry. It needs 30 days for the new ground to become dry.

2. Procedure of installation

Clean the ground → Coat adhesive → Lay floor → Cleaning

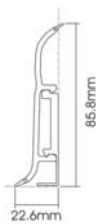
3. Maintenance of floor

- 1) It is not permitted that the sharp and rough heavy matters scribe and drag on the surface of floor and that personnel who wear shoes with nails walk on the floor. The floor should be kept clean and dry.
- 2) It is not permitted that the chairs which have black rubber cushion put on the floor in order to avoid black sulfide polluting its surface.
- 3) If there is oil or dirty things on its surface, it may be cleaned with detergent. If there is scribed sign, it can be recovered by fine abrasive paper.
- 4) If there is heavy oil and dirty caused by installation, our factory has special washer to clean them.

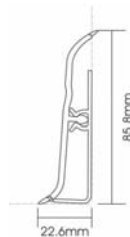


DecorLux® Foamed PVC Skirting

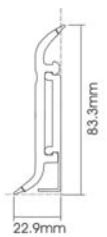
FP80-A



FP80-B



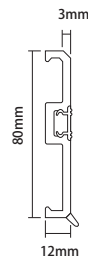
FP80-C



FP80-D



FP80-E



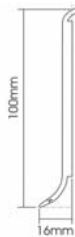
Technical Specification

Code No.	FP80-A	FP80-B	FP80-C	FP80-D	FP80-E
Material	PVC/Plastic				
Length	2.2m	2.2m	2.2m	2.95m	2.5m
Height	85.8mm	85.5mm	83.3mm	80mm	80mm
Thickness	3mm	2.8mm	4.5mm	-	3mm
Color range	Over 600 Colors or Customizing				
Surface treatment	Glossy/Matte/Semi-Matte				
Net weight	630g	1350g	705g	1475g	800g
Packing	32pcs/ctn	20pcs/ctn	28pcs/ctn	24pcs/ctn	30pcs/ctn
MOQ	3000m/color				
Application	Decoration line between wall and flooring, indoors decoration				
Packing	32pcs/carton, 2.2m/piece	20pcs/carton, 2.2m/piece	28pcs/carton, 2.2m/piece	24pcs/carton, 2.95m/piece	30pcs/carton, 2.5m/piece
Size/carton	2400*181*132mm	2220*176*156mm	2320*185*136mm	2960*236*120mm	2520*247*126mm
G.W/carton	22.3kgs	28kgs	21.5kgs	36.5kgs	25kgs
System	With Clip	With Basement	With Clip	With Strip	With Strip

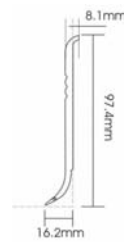


DecorLux® Foamed PVC Skirting

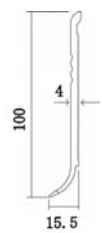
FP100-A



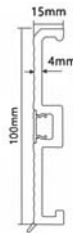
FP100-B



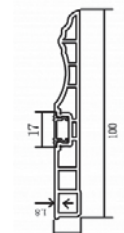
FP100-C



FP100-D



FP100-E



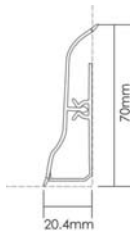
Technical Specification

Code No.	FP100-A	FP100-B	FP100-C	FP100-D	FP100-E
Material	PVC/Plastic				
Length	2.9m	2.9m	2.9m	2.95m	2.9m
Height	100mm	96mm	100mm	100mm	100mm
Thickness	4.5mm	3mm	4mm	4mm	1.8mm
Color range	Over 600 Colors or Customizing				
Surface treatment	Glossy/Matte/Semi-Matte				
Net weight	1126g	680g	880g	1505	1682g
Packing	40pcs/ctn	40pcs/ctn	30pcs/ctn	20pcs/ctn	20pcs/ctn
MOQ	3000m/color				
Application	Decoration line between wall and flooring, indoors decoration				
Packing	40pcs/carton, 2.9m/piece	40pcs/carton, 2.9m/piece	30pcs/carton, 2.9m/piece	20pcs/carton, 2.95m/piece	40pcs/carton, 2.9m/piece
Size/carton	2912*234*94mm	2920*208*74mm	2910*214*77mm	2960*211*161mm	2912*234*94mm
G.W/carton	45kgs	28.2kgs	27kgs	31kgs	45kgs
System	Flat Design	Flat Design	Flat Design	With Strip	With Strip

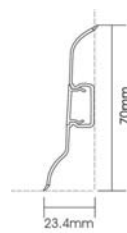


DecorLux® Hard PVC Skirting

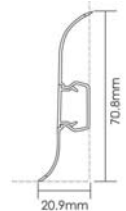
HP70-A



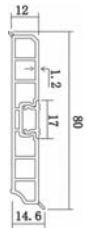
HP70-B



HP70-C



HP80-A



HP83-A



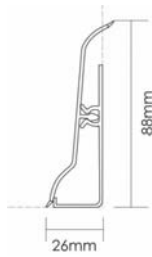
Technical Specification

Code No.	HP70-A	HP70-B	HP70-C	HP80-A	HP83-A
Material	PVC/Plastic				
Length	2.5m	2.5m	2.5m	2.95m	2.5m
Height	70mm	70mm	70.8mm	80mm	83mm
Thickness	1.2mm	1mm	0.9mm	1.2mm	-
Color range	Over 600 Colors or Customizing				
Surface treatment	Glossy/Matte/Semi-Matte				
Net weight	830g	550g	515g	1387g	825g
Packing	20pcs/ctn	40pcs/ctn	40pcs/ctn	24pcs/ctn	20pcs/ctn
MOQ	3000m/color				
Application	Decoration line between wall and flooring, indoors decoration				
Packing	20pcs/carton, 2.5m/piece	40pcs/carton, 2.5m/piece	40pcs/carton, 2.5m/piece	24pcs/carton, 2.95m/piece	20pcs/carton, 2.5m/piece
Size/carton	2515*158*128mm	2515*229*128mm	2515*233*134mm	2960*240*106mm	2510*169*114mm
G.W/carton	17.6kgs	22.8kgs	21.5kgs	34.5kgs	17.5kgs
System	With Basement	With Strip	With Strip	With Strip	Flat Design

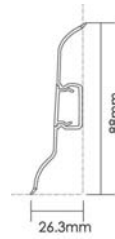


DecorLux® Hard PVC Skirting

HP88-A



HP88-B



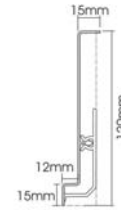
HP95-A



HP95-A-AL



HP120-A



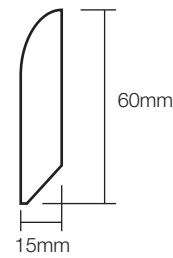
Technical Specification

Code No.	HP88-A	HP88-B	HP95-A	HP95-A-AL	HP120-A
Material	PVC/Plastic				
Length	2.4m	2.5m	2.5m	2.5m	2.5m
Height	88mm	88mm	95mm	95mm	120mm
Thickness	1.4mm	1.2mm	1.3mm	1.3mm	1.2mm
Color range	Over 600 Colors or Customizing				
Surface treatment	Glossy/Matte/Semi-Matte				
Net weight	1175g	730g	1475g	1500g	1470g
Packing	20pcs/ctn	20pcs/ctn	20pcs/ctn	20pcs/ctn	40pcs/ctn
MOQ	3000m/color				
Application	Decoration line between wall and flooring, indoors decoration				
Packing	20pcs/carton, 2.4m/piece	20pcs/carton, 2.5m/piece	20pcs/carton, 2.5m/piece	20pcs/carton, 2.5m/piece	20pcs/carton, 2.5m/piece
Size/carton	2415*194*129mm	2515*214*94mm	2515*196*144mm	2515*196*144mm	2510*263*132mm
G.W/carton	24.5kgs	15.5kgs	30.5kgs	31kgs	30.4kgs
System	With Basement	With Strip	With Strip	With Aluminum Strip	With Basement

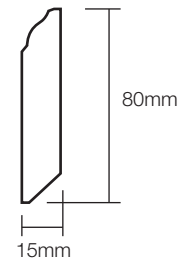


DecorLux® Wood Skirting

WP60



WP80



Technical Specification

Name	60mm skirting board	80mm MDF Skirting
Size	2400x60x15mm	2400x80x15mm
Color	Any Colour We Can Do	Any Colour We Can Do
Material	MDF/HDF	MDF/HDF
Surface Processing	Hot Pressing	Hot Pressing
Green Standards	E1	E1
Usage	Floor, Wall and Floor	Floor, Wall and Floor
Package	10PCS/Carton	10PCS/Carton
Production Capacity	100, 000PCS/Month	100, 000PCS/Month
Specification	ISO9001 and CE	ISO9001 and CE
HS Code	4411141900	4411141900
Origin	Changzhou, China	Changzhou, China