



High performing flexible homogeneous multipurpose flooring, durable with EASYCARE™ surface treatment

MIPOLAM® 180 is a durable, high performing flexible homogeneous multipurpose flooring recommended for hospitals, schools, offices, supermarkets and institutional buildings. It is an ease to maintain, hardwearing floorcovering with an attractive and modern design. It benefits from EASYCARE™ surface treatment with good resistance to chemicals and to scuffing, and high resistance to scratches and staining. Easy to clean. No wax for life!

*Deco*rlux

Key Features

- Excellent abrasion resistance
- Available in 2 m sheet
- Flexible flooring, easy to install & weld
- Matt finish surface: enhanced design & colour
- Homogeneous vinyl flooring suitable for medium to heavy duty traffic areas



Color number: 30



Sheet size: 200 cm x 20 lm



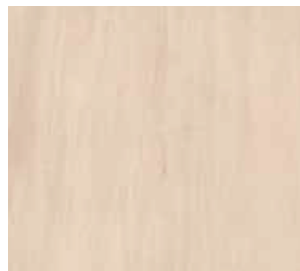
Thickness: 2.0 / 2.5*

MIPOLAM® 180 features bacteriostatic and fungistatic treatment. The flooring complies with the EN 649 (34 - 43) and has a Group P wear rating. It is suitable for heavy traffic areas.

Colorline



2001



2005



2006



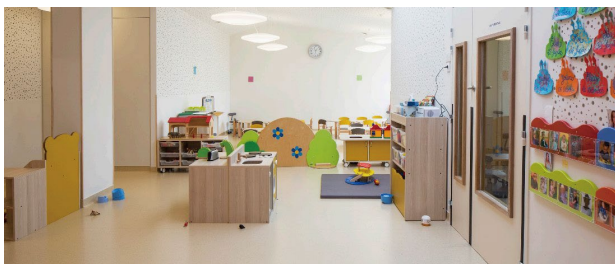
2007



2008

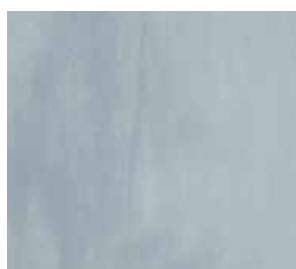


2021





2004



2028



2018



2013



2009



2023



2014



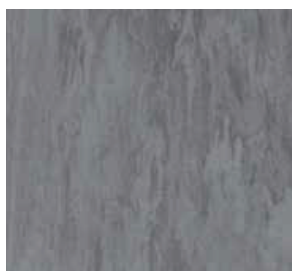
2010



2011



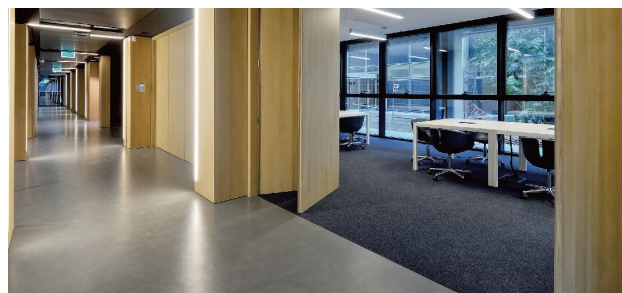
2015



2016



2017





2031



2022



2027



2025



2030



2029



2019



2003



2012



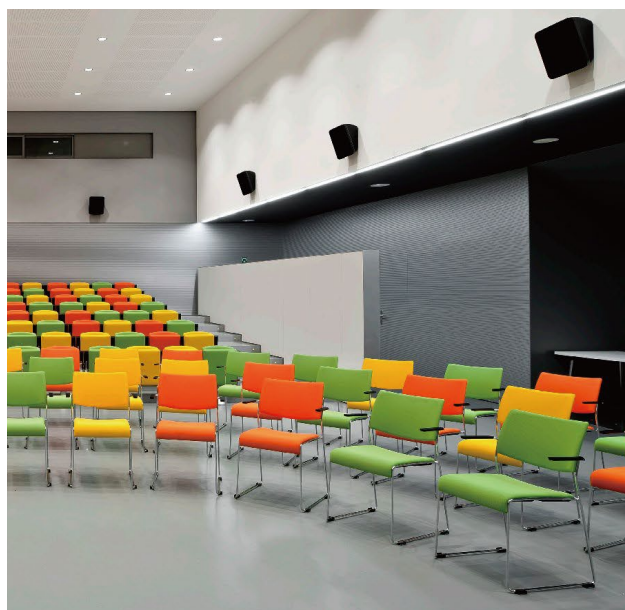
2020



2002



2026



INSTALLATION

Installation should be carried out in accordance with local standards. Subfloor should be smooth, hard, clean and dry prior to laying. Where applicable, the subfloor must incorporate an effective Damp Proof Membrane. The material must be allowed to acclimatize 24 hours before installation in a room temperature of between 18-24°C. All seams must be hot welded using Gerflor® matching welding rod.

MAINTENANCE

No emulsion dressing is required. Maintenance should be carried out regularly to retain in the appearance and durability of the floor. The floorcovering should be maintained with regular sweeping and damp mopping using a neutral cleanser. More intense cleaning should be carried out using a fine spray cleaning pad under a floor machine, or for larger areas combined machine cleaning.

Technical Specification

DESCRIPTION				
Total thickness	ISO 24346 (EN 428)	mm	2	2.5*
Weight	ISO 23997 (EN 430)	g/m ²	3150	3950
Width / Length of sheet	ISO 24341 (EN 426)	cm / lm	200 / 20	

CLASSIFICATION				
Norm / Product specification	-	-	ISO 10581 (EN 649)	
European classification	ISO 10874 (EN 685)	class	34 - 43	
Fire rating	EN 13 501-1	class	Bfl-s1	
Static electrical propensity	EN 1815	KV	<2	
Electrical resistance	EN 1081	Ω	10 ⁹ -10 ¹⁰	
Slip resistance dry	EN 13893	-	≥0.3	
Slip resistance wet	DIN 51130	class	R9	

PERFORMANCES				
Wear resistance	EN 660.2	mm ³	≤4.0	
Wear group	EN 649	group	M	
Type binder content	ISO 10581	type	II	
Dimensional stability	ISO 23999 (EN 434)	%	≤ 0.4	
Residual indentation	ISO 24343-1 (EN 433)	mm	≈0.04	
Castor chair test	ISO 4918 (EN 425)		OK	
Thermal conductivity	ISO 10456 (EN 12524)	W/(m.K)	≈0.25	
Colour fastness	ISO 105 - B02	degree	≥ 6	
Chemical products resistance	ISO 26987 (EN 423)	-	OK	
Anti-bacterial and fungicidal treatment	-	-	OK	
Surface treatment	-	-	EASYCARE™	
Color number	-	-	30	

ENVIRONMENT / INDOOR AIR QUALITY				
TVOC after 28 days	ISO 16000 - 6	µg/m ³	< 10	
Certification	-	-	Floorscore®	

CE MARKING				
	EN 14041	-		

* Special order, minimum quantities needed

Decorlux

©2023/MIP180/V01

Factory

Wuxi Decorlux Floor Co., Ltd.
2 Jishan Road, Jiangyin
Wuxi 214445
China
Info@Decorlux-Group.com
www.Decorlux-Group.com

Headquarters

593 Tongjiang Road
Century Jintian 828-830
Changzhou 213022
China
Phone +86 519 8988 3171
Fax +86 519 8988 3901

Important Note:

We reserve the right to change specification or design and supply products which may differ from those described and illustrated without notice and without liability. ©2023 Wuxi Decorlux Floor Co., Ltd.
Commercial Reg. No.: 9132028MACMDTXK27
VAT Reg. No.: 9132028MACMDTXK27