




## This is a story about modern glazed anti-static porcelain tile.....

Based on customized needs in the raised access flooring industry, Decorlux PT6000 porcelain tiles are widely used and suitable for high-end commercial space, data rooms, equipment room and control rooms etc. They are also the latest technological materials for cabinet, countertops, wardrobe, furniture and other fields.

*Decorlux*

## Key Features

- 1250 °C high temperature burning system, heavy force, firm as a rock.
- 7200 tons of pressure suppression, high density, no impurities, no water absorption, long service life.
- High precision cutting edge, high level of tile surface, brick and brick can be accurately spliced.
- Use imported protective glaze, brick surface has good wear resistance, anti-pollution effect, ensure thick brick products durable and new.

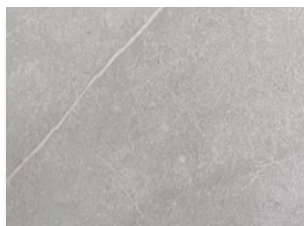
 Color number: 30

 Tile size: 600 x 600 mm

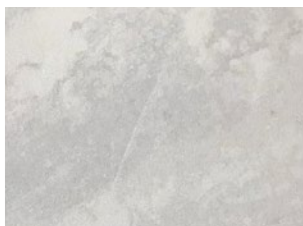
 Thickness: 10 mm

The bending resistance is up to 38 mpa, it can resist the impact of people flow in indoor and outdoor crowded environments.

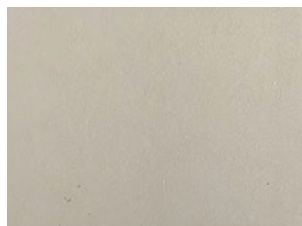
## Colorline



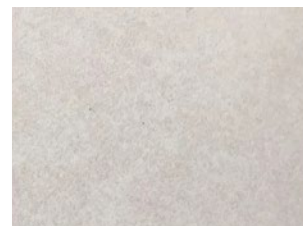
PT 6620-1



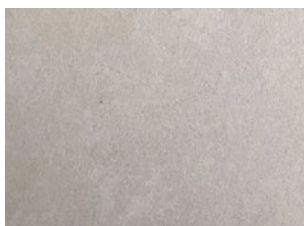
PT 6626



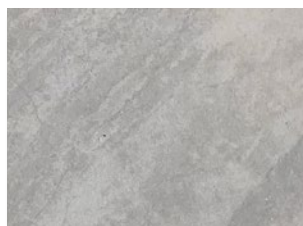
PT 6628-1



PT 6629



PT 6631



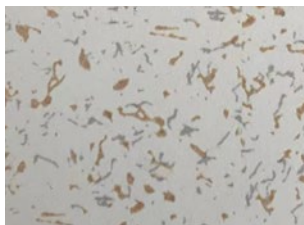
PT 6806-2



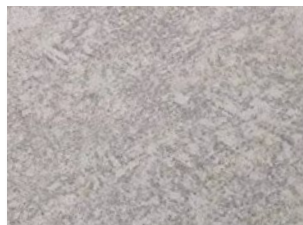
PT 6611



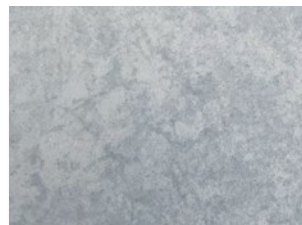
PT 6613



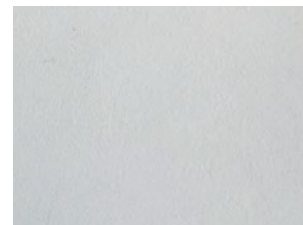
PT 6618



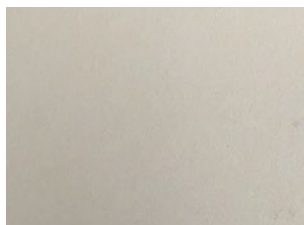
PT 6609



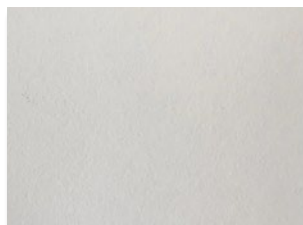
PT 6619



PT 6616-1



PT 6628



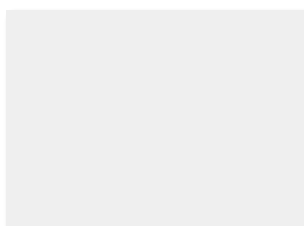
PT 6617-1



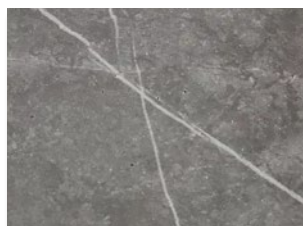
PT 6612



PT 6612-1



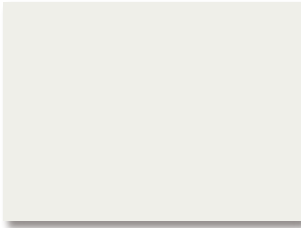
PT 6616



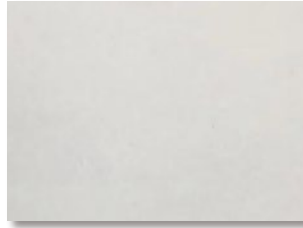
PT 6620







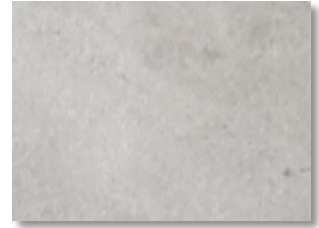
PT 6615



PT 6607



PT 6806-1



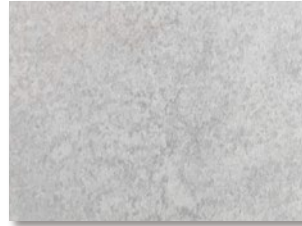
PT 6807-1



PT 6617



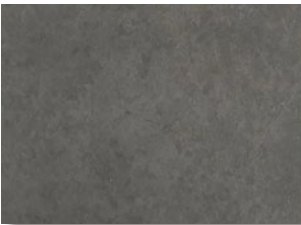
PT 6621



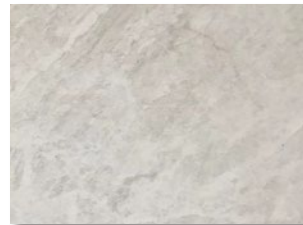
PT 6001



PT 6807



PT 6003



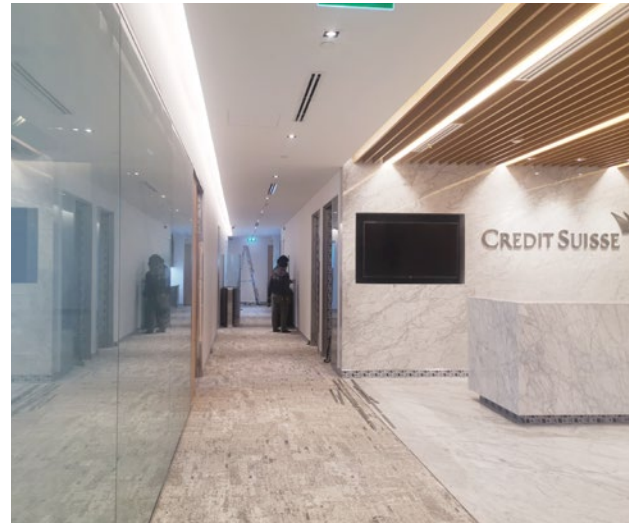
PT 6806



PT 6682



PT 6685



### Notes:

- Please contact Decorlux team for specific color samples - this printed palette is intended merely as a guide.
- Porcelain tiles are available in 600 x 600 mm and 10 mm thickness (nominal).
- Colors on above PT 6001; 6807; 6003; 6806; 6682; and 6685 are non anti-static tiles.

**Decorlux**

©2023/PT6000/V01

**Factory**

Wuxi Decorlux Floor Co., Ltd.  
2 Jishan Road, Jiangyin  
Wuxi 214445  
China  
Info@Decorlux-Group.com  
www.Decorlux-Group.com

**Headquarters**

593 Tongjiang Road  
Century Jintian 828-830  
Changzhou 213022  
China  
Phone +86 519 8988 3171  
Fax +86 519 8988 3901

**Important Note:**

We reserve the right to change specification or design and supply products which may differ from those described and illustrated without notice and without liability. ©2023 Wuxi Decorlux Floor Co., Ltd.  
Commercial Reg. No.: 9132028MACMDTXK27  
VAT Reg. No.: 9132028MACMDTXK27