



AirSeal® Grommet

RAG 140/175/280/320

AirSeal® Grommet

Rhino AirSeal® grommet is an airflow management to prevent cold and hot air mixing in a data center, and increase a data center's energy efficiency while increasing its cooling capacity. The Rhino AirSeal® grommet designed to seal access floor holes required for cable routing through the data center raised access floors, these products significantly minimize cool air loss, while improving the static pressure to effectively cool data center equipment, which helps prevent expensive electrical equipment from overheating.

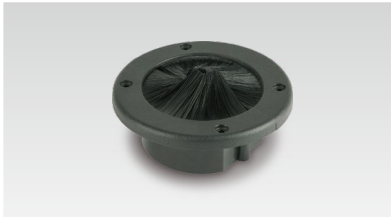
RHINO[®]
Strive for perfection!

Description

Rhino AirSeal® grommet is an airflow management to prevent cold and hot air mixing in a data center, and increase a data center's energy efficiency while increasing its cooling capacity. The Rhino AirSeal® grommet designed to seal access floor holes required for cable routing through the data center raised access floors, these products significantly minimize cool air loss, while improving the static pressure to effectively cool data center equipment, which helps prevent expensive electrical equipment from overheating.



AirSeal® Round

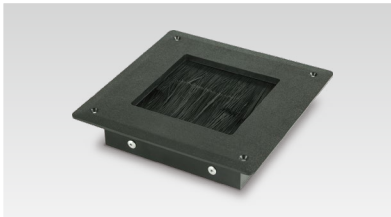


RAG-140

Cover size:
Ø145mm
Body size:
Ø100mm
Access floor open size:
Ø105mm

Together the brushes and rubber gasket work in tandem to hold cables in the center of the cutout while limiting the passage of contaminants under the floor. The dual stage sealing system provides a superior seal to prevent airflow bypass, reduce energy consumption, and aid in the implementation of hot/cold aisle containment or floor configurations.

AirSeal® Square



RAG-175

Cover size:
175mm × 175mm
Body size:
134mm × 134mm
Access floor open size:
135mm × 135mm

The RAG-175 is a square design of heavy duty air seal grommet for raised floor cutouts prior to installation of communications or power cabling. ABS polycarbonate material made provides a finished look on all raised floor panels. Solid construction and the textured surface compliment all floor coverings.

AirSeal® Rectangular



RAG-280

Cover size:
280mm × 210mm
Body size:
235mm × 165mm
Access floor open size:
237mm × 167mm

The RAG-280 rectangular designed to accommodate either single cables or large bundles of cables through the same opening, providing flexibility for future wiring needs. ABS polycarbonate material made provides a finished look on all raised floor panels. Solid construction and the textured surface compliment all floor coverings.

AirSeal® Ultra



RAG-320

Cover size:
320mm × 270mm
Body size:
265mm × 227mm
Access floor open size:
270mm × 230mm

The RAG-320 Ultra designed to accommodate large bundles of cables through the same opening, providing flexibility for future wiring needs. ABS polycarbonate material made provides a finished look on all raised floor panels. Solid construction and the textured surface compliment all floor coverings.

RHINO[®]

Strive for perfection!

Corporate Headquarters

111 S.K.V. Building, 4th Floor
Soi Sansabai, Klongton
Klongtoey, Bangkok 10110
Thailand

T/ (662) 661 2990

F/ (662) 661 2991

China Office

593, Tongjiang Road
Jintian Plaza 828-830
Changzhou 213022
Jiangsu, China

T/ (86) 519 8988 3171

F/ (86) 519 8988 3901

Hong Kong Office

Unit 908, 9/F, LT Tower
31 Chong Yip Street
Kwun Tong, Kowloon
Hong Kong

T/ (852) 2865 6816

F/ (852) 2865 6813

Production Unit

Hengshanqiao
Wujin District
Changzhou 213119
Jiangsu, China

T/ (86) 519 8860 7959

F/ (86) 519 8860 5659

www.RhinoAccessFloors.com