



RhinoROC®
Steel Cement Filled Panel



CL 600/700/800
ROC 100/200/300/400/500/600
Bare Finish Panel

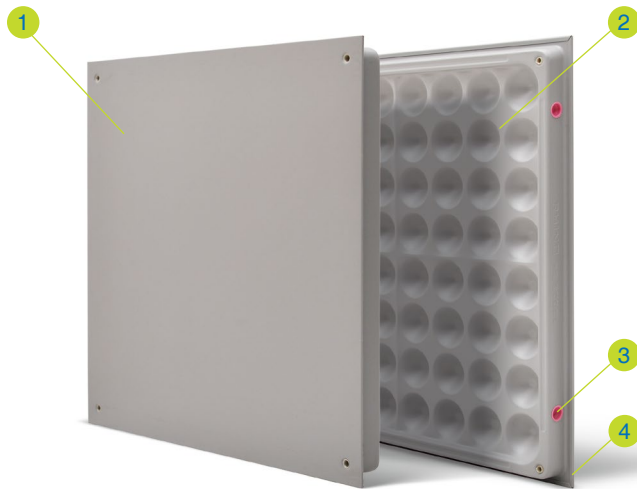
RhinoROC® bare finish panels are manufactured from cold rolled steel resistance welded, light weight cement-filled steel panels are specifically designed to accommodate dynamic loads and to withstand some of the highest ultimate loads in the industry. The design incorporates a classic 64 domes bottom shell with cross-beams and 4-ribbed beams strengthen center and perimeter of the panel, total 140 resistance welds dramatically improved edge load capacities, and overall panel durability.

RHINO®
Strive for perfection!

Technical Data Sheet

RhinoROC® Bare

Panel



1 Top Steel-plate

Thickness: Various
Material: Cold rolled steel (SPCC)

2 Bottom Shell

Material: Cold rolled steel (ST14)
Construction: Classic 64-dome design
Stiffening Rib: Cross beams + 4-ribbed beams

3 Cement Injection

Material: Light weight cement filled
Seal: Plastic plug, pink color

4 Edge Construction

Folded Edge: CL 600/700/800
Die-cut Edge: ROC 100/200/300
ROC 400/500/600

Description

RhinoROC® bare finish panels are manufactured from cold rolled steel resistance welded, light weight cement-filled steel panels are specifically designed to accommodate dynamic loads and to withstand some of the highest ultimate loads in the industry. The design incorporates a classic 64 domes bottom shell with cross-beams and 4-ribbed beams strengthen center and perimeter of the panel, total 140 resistance welds dramatically improved edge load capacities, and overall panel durability.

Features

- Accommodates maximum dynamic loads to 33kN
- Interchangeable with other Roc panels
- Quiet, with a solid feel underfoot
- Powder-coated, protective epoxy finish

Folded Edge



Humanize designed smooth edges, no scratches and rust free.

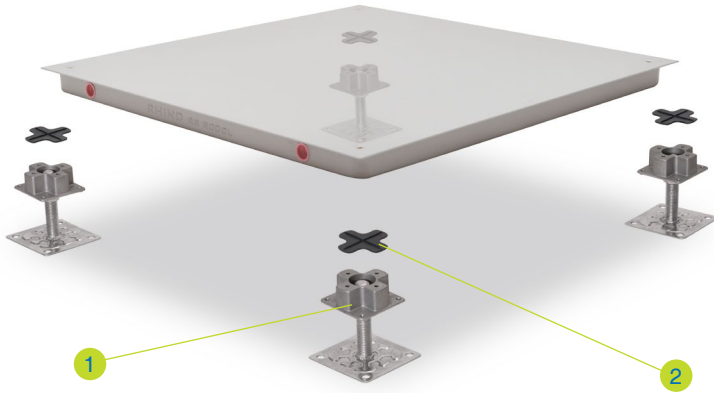
Die-cut Edge



Total 140 welds, die-cut 100% square and air leakage free.

Panel Type	Panel Size	Core Material	Panel Construction	Panel Thickness (Nominal)	System Weight (Typical)
CL 600	600mm square	Light weight cement-filled	Cold rolled steel resistance welded	33.50 mm	37 kg/m ²
CL 700	600mm square	Light weight cement-filled	Cold rolled steel resistance welded	33.50 mm	38 kg/m ²
CL 800	600mm square	Light weight cement-filled	Cold rolled steel resistance welded	33.50 mm	39 kg/m ²
ROC 100	600/610mm square	Light weight cement-filled	Cold rolled steel resistance welded	33.50 mm	42 kg/m ²
ROC 200	600/610mm square	Light weight cement-filled	Cold rolled steel resistance welded	33.50 mm	45 kg/m ²
ROC 300	600/610mm square	Light weight cement-filled	Cold rolled steel resistance welded	34.00 mm	48 kg/m ²
ROC 400	600/610mm square	Light weight cement-filled	Cold rolled steel resistance welded	34.00 mm	51 kg/m ²
ROC 500	600/610mm square	Light weight cement-filled	Cold rolled steel resistance welded	34.00 mm	54 kg/m ²
ROC 600	600/610mm square	Light weight cement-filled	Cold rolled steel resistance welded	34.00 mm	56 kg/m ²

System



1 Standard Pedestal

Electro-galvanized steel made base assembly with aluminum die-casted head pedestal is suitable for raised floors with a finished floor height from 50mm to 450mm.
 Head: Aluminum alloy
 Base: Steel, galvanized & blue passivated

2 Cross Gasket

Plastic conductive material with sound proofing and sealing functions, equipped with a cross ribs for the positioning of panels.
 Thickness: 2.0mm

Pedestal



1 Pedestal Head

Die formed aluminum to form a solid support

2 Adjusting Nut

M18 nut can adjust to the required length of the steel thread rod

3 Locking Arm

Locking arm helps installer lock the system more easily

4 Steel Thread Rod

M18 steel rod

5 Foot Plate

100x100x2.0mm

Performance

- This cornerlocked understructure system is tested in accordance with USA CISCA specification.
- Panel deflection at centre edge must not exceed 2.5mm
- Performance to a safety factor of 3 x static load
- Structural performance based upon a full Rhino access floors system i.e. panels & pedestals.



Panel Type	Understructure	Performance Grades	Static Loads			Rolling Loads		Impact Loads
			Concentrated Load	Ultimate Load (Safety Factor* 3.0)	Uniform Load	10 Passes	10,000 Passes	
CL 600	Corner Locked	Medium Duty	600 lbs 2.67 kN	1,800 lbs 8.01 kN	250 lbs/ft ² 12 kN/m ²	400 lbs 1.78 kN	200 lbs 0.89 kN	150 lbs 0.67 kN
CL 700	Corner Locked	Medium Duty	700 lbs 3.11 kN	2,100 lbs 9.34 kN	275 lbs/ft ² 13 kN/m ²	500 lbs 2.22 kN	300 lbs 1.33 kN	150 lbs 0.67 kN
CL 800	Corner Locked	Medium Duty	800 lbs 3.56 kN	2,400 lbs 10.68 kN	300 lbs/ft ² 14 kN/m ²	600 lbs 2.67 kN	400 lbs 1.78 kN	150 lbs 0.67 kN
ROC 100	Corner Locked Bolted Stringer	Medium Duty	800 lbs 3.56 kN	2,400 lbs 10.68 kN	300 lbs/ft ² 14 kN/m ²	600 lbs 2.67 kN	400 lbs 1.78 kN	150 lbs 0.67 kN
ROC 200	Corner Locked Bolted Stringer	Heavy Duty	1,000 lbs 4.45 kN	3,000 lbs 13.34 kN	350 lbs/ft ² 17 kN/m ²	800 lbs 3.56 kN	600 lbs 2.67 kN	150 lbs 0.67 kN
ROC 300	Corner Locked Bolted Stringer	Extra Heavy Duty	1,250 lbs 5.56 kN	3,750 lbs 16.68 kN	400 lbs/ft ² 19 kN/m ²	1,000 lbs 4.45 kN	800 lbs 3.56 kN	150 lbs 0.67 kN
ROC 400	Corner Locked Bolted Stringer	Super Heavy Duty	1,500 lbs 6.67 kN	4,500 lbs 20.02 kN	450 lbs/ft ² 22 kN/m ²	1,250 lbs 5.56 kN	1,000 lbs 4.45 kN	150 lbs 0.67 kN
ROC 500	Corner Locked Bolted Stringer	Industrial Heavy Duty	2,000 lbs 8.90 kN	6,000 lbs 26.70 kN	550 lbs/ft ² 26 kN/m ²	1,500 lbs 6.67 kN	1,250 lbs 5.56 kN	200 lbs 0.89 kN
ROC 600	Corner Locked Bolted Stringer	Military Heavy Duty	2,500 lbs 11.12 kN	7,500 lbs 33.36 kN	650 lbs/ft ² 31 kN/m ²	2,000 lbs 8.90 kN	1,500 lbs 6.67 kN	200 lbs 0.89 kN

RHINO[®]

Strive for perfection!

Corporate Headquarters

111 S.K.V. Building, 4th Floor
Soi Sansabai, Klongton
Klongtoey, Bangkok 10110
Thailand

T/ (662) 661 2990

F/ (662) 661 2991

China Office

593, Tongjiang Road
Jintian Plaza 828-830
Changzhou 213022
Jiangsu, China

T/ (86) 519 8988 3171

F/ (86) 519 8988 3901

Hong Kong Office

Unit 908, 9/F, LT Tower
31 Chong Yip Street
Kwun Tong, Kowloon
Hong Kong

T/ (852) 2865 6816

F/ (852) 2865 6813

Production Unit

Hengshanqiao
Wujin District
Changzhou 213119
Jiangsu, China

T/ (86) 519 8860 7959

F/ (86) 519 8860 5659

www.RhinoAccessFloors.com