



RhinoAlutec®  
Aluminum Perforated Panel



## ALP 1000/1250/1500

Aluminum Perforated Panel

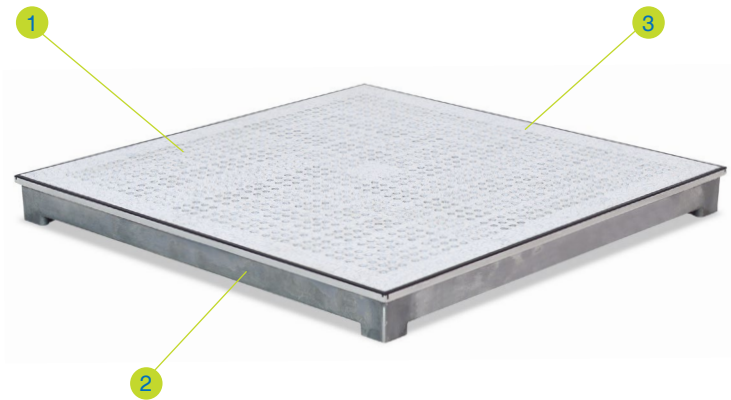
RhinoAlutec® aluminum perforated panel has the same lattice structure design of solid panel, the top of the panel is laminated with anti-static HPL or conductive vinyl, this perforated panel with 1,080 chamfered holes and nominal air open ratios from 17% - 25% are designed to meet specific air flow requirements for both data centers and clean rooms.

**RHINO**®  
*Strive for perfection!*

# Technical Data Sheet

RhinoAlutec® Perforated

## Panel



### 1 Airflow Rates

Rates: 17% - 25%

### 2 Aluminum Perforated Panel

Size: 600x600mm

Thickness: 50/55mm

Material: Aluminum Alloy

### 3 Top Layer

Thickness: Various

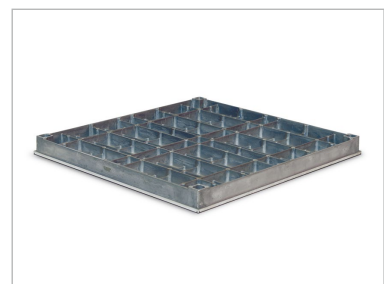
Material: HPL/ESD vinyl (PVC)

## Description

RhinoAlutec® aluminum perforated panel has the same lattice structure design of solid panel, the top of the panel is laminated with anti-static HPL or conductive vinyl, this perforated panel with 1,080 chamfered holes and nominal air open ratios from 17% - 25% are designed to meet specific air flow requirements for both data centers and clean rooms.

## Features

- Anti-corrosion and anti-magnetic
- Impressive acoustic performance
- Superb underfoot comfort
- Light weight and high load capacity
- Wide range of covering options
- 17% - 25% airflow rates

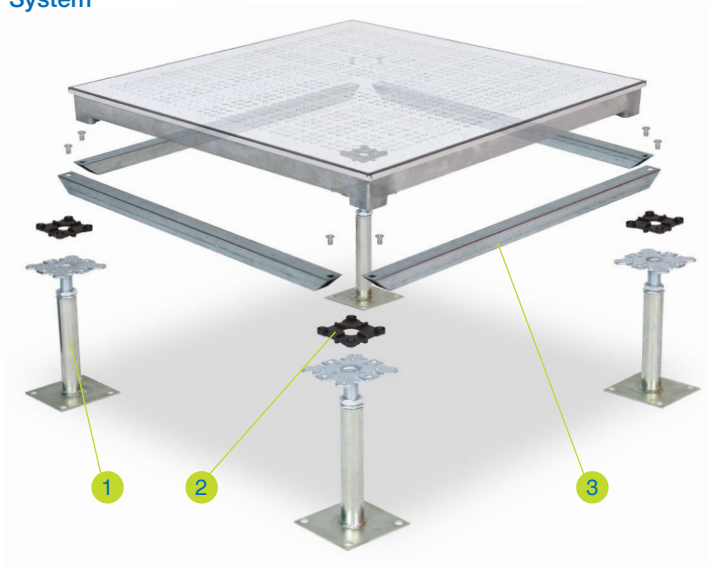


Panel Type	Panel Size	Core Material	Panel Construction	Panel Thickness (Nominal)	System Weight (Typical)
ALP 1000	600mm square	Aluminum Alloy	Precision-machined with perforated and various finish on top	50/55 mm	31.07 Kg/m <sup>2</sup>
ALP 1250	600mm square	Aluminum Alloy	Precision-machined with perforated and various finish on top	50/55 mm	33.85 Kg/m <sup>2</sup>
ALP 1500	600mm square	Aluminum Alloy	Precision-machined with perforated and various finish on top	50/55 mm	36.63 Kg/m <sup>2</sup>

# Technical Data Sheet

RhinoAlutec® Perforated

## System



**1 Standard Pedesta**  
Hot-dip galvanized steel made pedestal is suitable for raised floors with a finished floor height from 150mm to 1800mm.  
Material: Steel, Hot-dip galvanized.

**2 Head Gasket**  
Plastic conductive material with sound proofing and sealing functions, equipped with tabs for the positioning of panels.  
Thickness: 3.5 mm

**3 Stringer**  
Steel tube performed stringer provide best supports to the structural system with limited air leakage and outstanding acoustic performance.  
Dimension: 543mm x 25mm x 25mm  
Thickness: 0.8/1.0/1.2mm

## Pedestal



**1 Head Assembly**  
Head plate: 90mm x 90mm x 3.0mm  
Threaded rod: M18

**2 Adjusting Nut**  
M18

**3 Base Tube**  
Ø25mm x 2.5mm

**4 Base Plate**  
100mm x 100mm x 2.5mm

## Performance

- This rigid grid system is tested in accordance with PSA MOB PS/SPU specification.
- Panel deflection at centre edge must not exceed 2.5mm
- Performance to a safety factor of 3 x static load
- Structural performance based upon a full Rhino access floors system i.e. panels & pedestals.



Panel Type	Panel Grade	Concentrated Load		Uniformly Distribution Load	Ultimate Load
		Point Load	Load Over		
		25mm x 25mm square	300mm x 300mm square		
ALP 1000	Heavy Duty	4.50 kN	5.56 kN	12.00 kN/m <sup>2</sup>	13.50 kN
ALP 1250	Extra Heavy Duty	5.56 kN	6.67 kN	16.00 kN/m <sup>2</sup>	16.68 kN
ALP 1500	Industrial Duty	6.67 kN	8.90 kN	20.00 kN/m <sup>2</sup>	20.01 kN

# **RHINO**<sup>®</sup>

*Strive for perfection!*

## **Corporate Headquarters**

111 S.K.V. Building, 4<sup>th</sup> Floor  
Soi Sansabai, Klongton  
Klongtoey, Bangkok 10110  
Thailand

**T/** (662) 661 2990

**F/** (662) 661 2991

## **China Office**

593, Tongjiang Road  
Jintian Plaza 828-830  
Changzhou 213022  
Jiangsu, China

**T/** (86) 519 8988 3171

**F/** (86) 519 8988 3901

## **Hong Kong Office**

Unit 908, 9/F, LT Tower  
31 Chong Yip Street  
Kwun Tong, Kowloon  
Hong Kong

**T/** (852) 2865 6816

**F/** (852) 2865 6813

## **Production Unit**

Hengshanqiao  
Wujin District  
Changzhou 213119  
Jiangsu, China

**T/** (86) 519 8860 7959

**F/** (86) 519 8860 5659

[www.RhinoAccessFloors.com](http://www.RhinoAccessFloors.com)