



Meiah® Colorline 1

High Pressure Laminate (HPL)

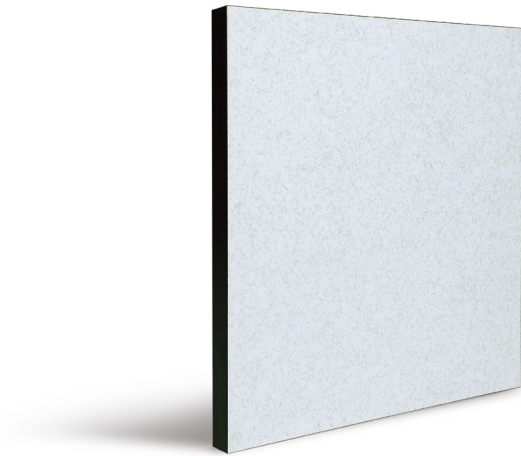


Meiah® high-pressure decorative plastic laminate is produced in accordance with the European standard EN 438 Class W2. Rhino finds it's an ideal application in floors for which high surface wear is necessary, and finds it's the best use in the construction of access floors which can be installed on all types of floor, whether old or new. The surface of Rhino Meiah® HPL is non-toxic, chemically inert and non-allergenic.

RHINO®
Strive for perfection!

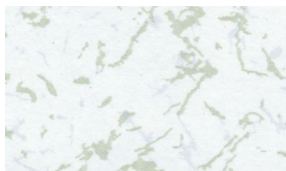
Description

Meiah® high-pressure decorative plastic laminate is produced in accordance with the European standard EN 438 Class W2. Rhino finds it's an ideal application in floors for which high surface wear is necessary, and finds it's the best use in the construction of access floors which can be installed on all types of floor, whether old or new. The surface of Rhino Meiah® HPL is non-toxic, chemically inert and non-allergenic.



Performance

- Special anti-static properties
- Excellent resistance to wear and tear
- Excellent resistance to scratching
- Excellent resistance to impact
- Excellent resistance to damp and static load resistance
- Excellent resistance to high temperatures, including those of cigarette burns
- Excellent reaction to fire with low fume-generation
- Particular resistance to chemical products and cleaning agents, including organic solvents
- Easy to clean and maintenance
- Good dimensional stability



Meiah® 2010



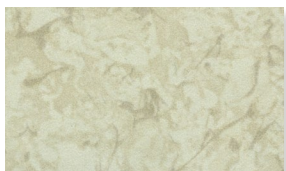
Meiah® 2010-1



Meiah® 2010-2



Meiah® 2010-4



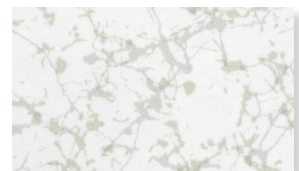
Meiah® 2010-5



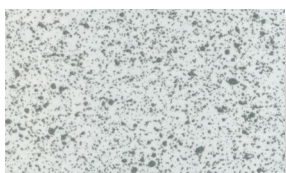
Meiah® 2010-6



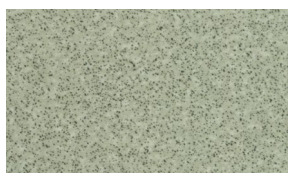
Meiah® 2010-7



Meiah® 2010-8



Meiah® 2103



Meiah® 2158



Meiah® 2069



Meiah® 2208

Technical Data Sheet

Meiah® HPL Colorline 1



| | Specification | Test Standard | Rhino Meiah® Anti-static High Pressure Laminate |
|--|---|--|--|
| FLOOR CLASSIFICATION | Type of Floor Covering | EN649 | Anti-static HPL |
| | | ASTM F 1700 | Class III - Type B, High Pressure Laminate |
| | | NFPA Life sfty code 101 | Class 1 - Interior Floor Finish |
| | | NFPA 99 Standard for health care facility | Meets Standard |
| | Floor Classification (Wear rating / Static load resistance) | EN 685 | Commercial: 34 / Industrial: 43 |
| | No of Color | | 12 |
| PHYSICAL FEATURES | Tile Dimension Size | EN 427 90° Press Cutting | 600×600 / 610×610 |
| | | ASTM F 536: Size Tolerance (<±0.4mm / 305mm) | < ±0.4mm / 305mm |
| | Dimensional Stability | EN 434 /FED STD NO. 501a, M 6211 | < 0.25% |
| | | ASTM F 540: Square Tolerance (<0.51mm / 305mm) | < 0.51mm / 305mm |
| | Wear Layer Thickness | EN 429 | 0.30mm |
| | Inter Layer | | Print film |
| | Total Thickness | EN 428 | Metric: 1.2mm / 2.0mm English: 1/16"(1.6mm) / 1/8"(3.2mm) |
| | | ASTM F 386: Thickness Tolerance (±0.13mm) | Meets Standa |
| | Weight / m² | EN 430 | 1.2mm: 1.5 kg/m²; 2.0mm: 2.5 kg/m² 1.6mm: 1.8 kg/m²; 3.2mm: 3.6 kg/m² |
| | Wear Resistance (Abrasion / Thickness Loss) | EN 660-1 | < 0.08mm |
| | | EN 649 | Group T |
| | | ASTM D 4060 (CS-17 Wheel, 1,000 g, 1,000 cycles) | 70mg |
| | Hardness | ASTM D 2240 (Type D) | 67 |
| | Residual indentation | EN 433 / Din 51955 | <0.04mm |
| | | ASTM F 1914 (<8%) | <8% |
| | Static Load Limit | ASTM F 970 | 3,000 lbs/square inch; Long term |
| Flexibility | ASTM F 137 | No Crack or Breaking | |
| Castors Wheel test | EN 425 | No Damage | |
| ELECTRICAL FEATURES | Electrical Resistance | DIN 51953 / EN 1081 | Anti-static $10^9 < R < 10^{12}$ |
| | | ASTM F 150 / ESD F 7.1 / UL 779 | Anti-static $1.0 \times 10^9 \sim 1.0 \times 10^{12}$ |
| FIRE RESISTANCE | Critical Radiant Flux | ASTM E 648 / NFPA 253 | Class 1 (1.08 w/cm²) |
| | Flame Spread | ASTM E 162 / ASTM E 84 / NFPA 225 | NFPA Class B / UBC Class II (<75) |
| | Smoke Density | ASTM E 662 / NFPA 258 | Passed (<450Dme) |
| | Thermal Conductivity | DIN 52612 / NFX 10021 | 0.309 w/m.k |
| | Underfloor Heating | DIN 52612 | Suitable - Max 30C |
| ASTM F 1514 ($\Delta E < 8$ ave, max) | | < $\Delta E = 8.0$ | |
| CHEMICAL RESISTANCE | Chemical Resistance | EN 423 / DIN 51958 | Excellent; Test Report available on request |
| | | ASTM D 543 / ASTM F 925 | Excellent; Test Report available on request |
| SLIP RESISTANCE | Slip Resistance | Wet | |
| | | DIN 51130 / BGR181 (ZH1 / 571) | R9 |
| | | ADA Requirements | > 0.6 |
| | prEN 13893 | 0.89 μ | |
| | Dry | EN 13893 | > 0.3 |
| LIGHT RESISTANCE | Color Fastness | EN 20105-B 02 | > 6 |
| | | ISO 105 B 02, Met. 3 - DIN53389 | 7 |
| | Resistance to Light | ASTM F 1515 ($\Delta E < 8$ ave, max) | < $\Delta E = 8.0$ |
| OTHER PROPERTIES | Impact Sound Reduction | ISO 717 / 2 | 4 dB |
| | Sound Absorption | ISO 140-8 / ISO 717 | 3 dB |
| | Water Absorption | ASTM D 570 | 0.03% water weight gain |
| | Ease of Decontamination | DIN 25415-1 / ISO 8690 | Excellent |
| | Recyclable | | Yes |
| Formulation | | High Pressure Laminate Static Control HPL | |

RHINO[®]

Strive for perfection!

Corporate Headquarters

111 S.K.V. Building, 4th Floor
Soi Sansabai, Klongton
Klongtoey, Bangkok 10110
Thailand

T/ (662) 661 2990

F/ (662) 661 2991

China Office

593, Tongjiang Road
Jintian Plaza 828-830
Changzhou 213022
Jiangsu, China

T/ (86) 519 8988 3171

F/ (86) 519 8988 3901

Hong Kong Office

Unit 908, 9/F, LT Tower
31 Chong Yip Street
Kwun Tong, Kowloon
Hong Kong

T/ (852) 2865 6816

F/ (852) 2865 6813

Production Unit

Hengshanqiao
Wujin District
Changzhou 213119
Jiangsu, China

T/ (86) 519 8860 7959

F/ (86) 519 8860 5659

www.RhinoAccessFloors.com