



Bluetec®

Homogeneous ESD Vinyl



Bluetec® homogeneous ESD vinyl (PVC) guarantees permanent stability on electro-conductive resistance ($2.5 \times 10^4 \sim 1.0 \times 10^9 \Omega$) or static dissipative resistance ($1.0 \times 10^4 \sim 1.0 \times 10^9 \Omega$), it has been widely used in electronic industry, semi-conductor industry, telecommunications industry, medical industry and healthcare environment. Rhino access floors with Bluetec® ESD vinyl finish is the best choice for computer room, clean room, laboratory, telephone/mobile phone switching center, facility control center, and places where request static control, dust free, and friendly environment.

RHINO®
Strive for perfection!

Technical Data Sheet

Bluetec® ESD Vinyl



Description

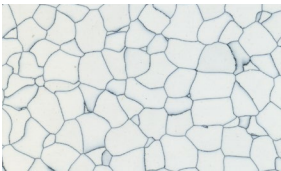
Bluetec® homogeneous ESD vinyl (PVC) guarantees permanent stability on electro-conductive resistance ($2.5 \times 10^4 \sim 1.0 \times 10^6 \Omega$) or static dissipative resistance ($1.0 \times 10^4 \sim 1.0 \times 10^9 \Omega$), it has been widely used in electronic industry, semi-conductor industry, telecommunications industry, medical industry and healthcare environment. Rhino access floors with Bluetec® ESD vinyl finish is the best choice for computer room, clean room, laboratory, telephone/mobile phone switching center, facility control center, and places where request static control, dust free, and friendly environment.



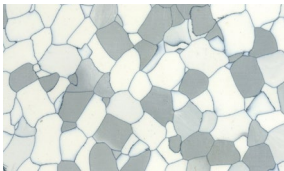
Performance

- Excellent electrical resistance
- Excellent fire resistance
- Excellent chemical resistance
- Excellent resistance to wear and tear
- Excellent resistance to scratching
- Excellent resistance to impact
- Excellent resistance to damp and static load resistance
- Easy to clean and maintenance
- Good dimensional stability

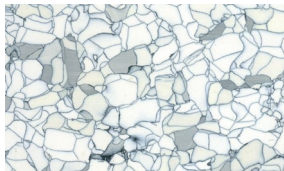
Colorline 1



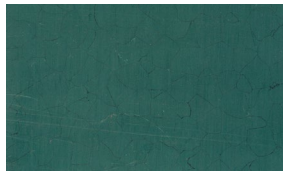
Bluetec® C1-601



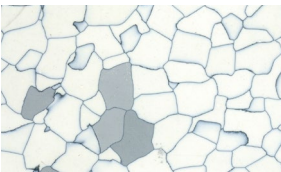
Bluetec® C1-602



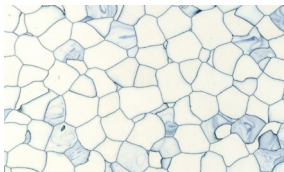
Bluetec® C1-603



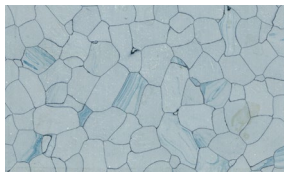
Bluetec® C1-604



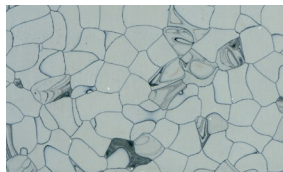
Bluetec® C1-606



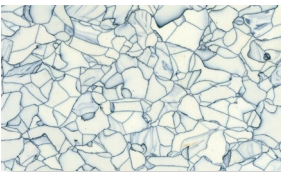
Bluetec® C1-611



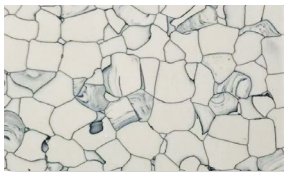
Bluetec® C1-615



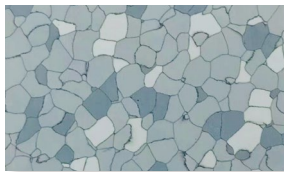
Bluetec® C1-616



Bluetec® C1-617



Bluetec® C1-8601



Bluetec® C1-8638



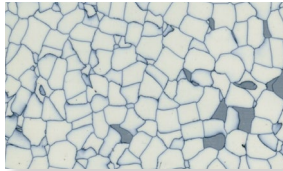
Bluetec® C1-8639

Technical Data Sheet

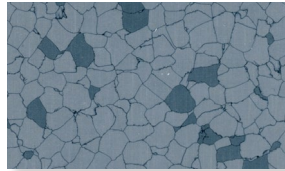
Bluetec® ESD Vinyl



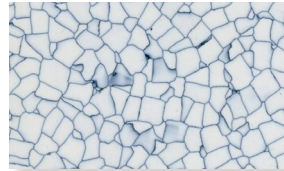
Colorline 2



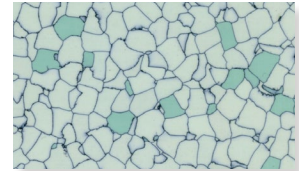
Bluetec® C2-9301



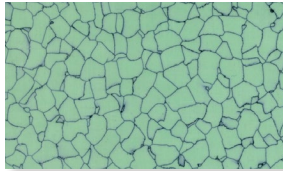
Bluetec® C2-9302



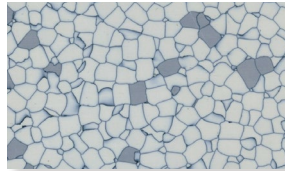
Bluetec® C2-9303



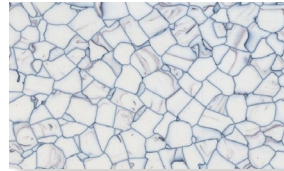
Bluetec® C2-9305



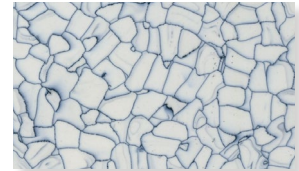
Bluetec® C2-9306



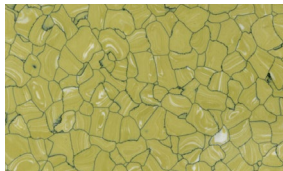
Bluetec® C2-9603



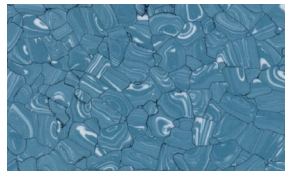
Bluetec® C2-0501



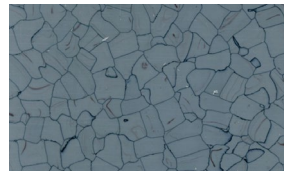
Bluetec® C2-0503



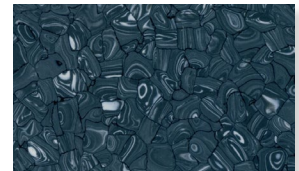
Bluetec® C2-0506



Bluetec® C2-0509



Bluetec® C2-0510



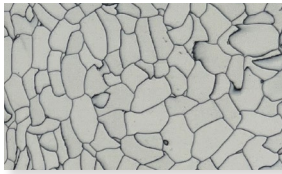
Bluetec® C2-0511

Technical Data Sheet

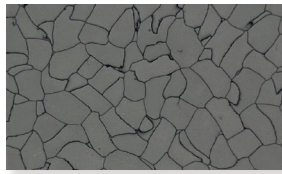
Bluetec® ESD Vinyl



Colorline 3



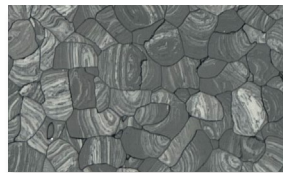
Bluetec® C3-01



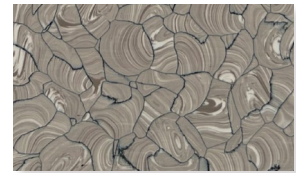
Bluetec® C3-06



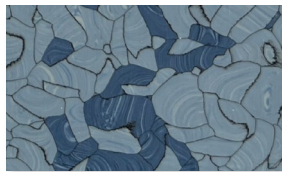
Bluetec® C3-603



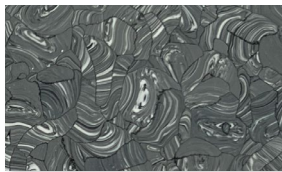
Bluetec® C3-605



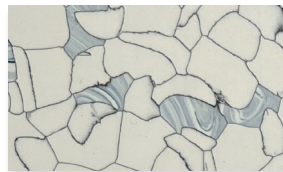
Bluetec® C3-606



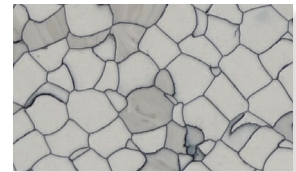
Bluetec® C3-607



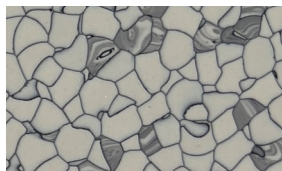
Bluetec® C3-608



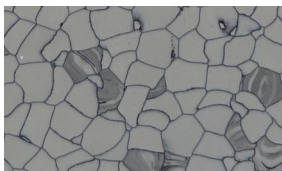
Bluetec® C3-609



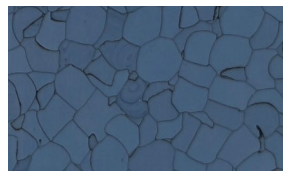
Bluetec® C3-801



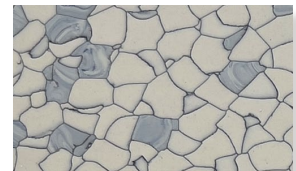
Bluetec® C3-803



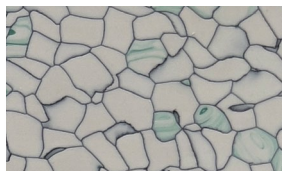
Bluetec® C3-805



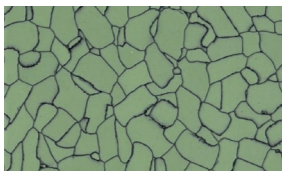
Bluetec® C3-807



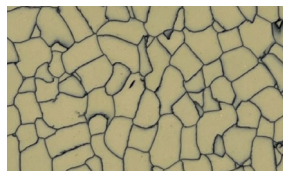
Bluetec® C3-808



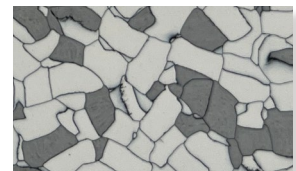
Bluetec® C3-809



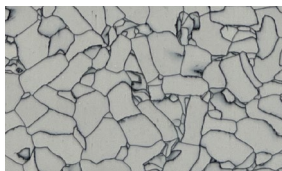
Bluetec® C3-901



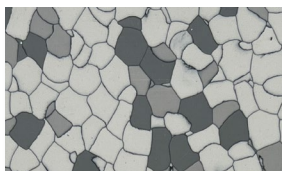
Bluetec® C3-903



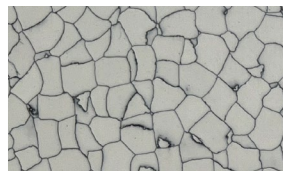
Bluetec® C3-909



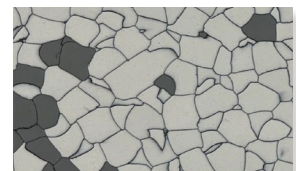
Bluetec® C3-9022



Bluetec® C3-1101



Bluetec® C3-1103



Bluetec® C3-1104

Technical Data Sheet

Bluetec® ESD Vinyl



	Specification	Test Standard	Rhino Bluetec® Homogeneous ESD Vinyl
FLOOR CLASSIFICATION	Type of Floor Covering	EN649	Homogeneous EC / SD Vinyl Flooring
		ASTM F 1700	Class 1 - Type A, Solid Vinyl Tile
		NFPA Life sfty code 101	Class 1 - Interior Floor Finish
		NFPA 99 Standard for health care facility	Meets Standard
	Floor Classification (Wear rating / Static load resistance)	EN 685	Commercial: 34 / Industrial: 43
	No of Color		45
Cleanroom Classification	Federal Standard 209 E	Meets Class 1 Cleanroom Requirements	
Outgassing: CVCM	ASTM E 594	CVCM 2.65%	
PHYSICAL FEATURES	Tile Dimension Size	EN 427 90° Press Cutting	600×600 / 610×610
		ASTM F 536: Size Tolerance (<±0.4mm / 305mm)	< ±0.4mm / 305mm
	Dimensional Stability	EN 434 /FED STD NO. 501a, M 6211	< 0.25%
		ASTM F 540: Square Tolerance (<0.51mm / 305mm)	< 0.51mm / 305mm
	Wear Layer Thickness	EN 429	2.00mm / 3.00mm
	Wear Layer Reinforcement/Glossy Surface Treatment		Heat Surface Melting Coating
	Total Thickness	EN 428	2.00mm / 3.00mm
		ASTM F 386: Thickness Tolerance (±0.13mm)	Meets Standard
	Weight / m²	EN 430	2.00mm: 3.10kg/m² / 3.00mm: 4.82kg/m²
	Wear Resistance (Abrasion / Thickness Loss)	EN 660-1	< 0.15mm
		EN 649	Group P
		ASTM D 4060 (CS-17 Wheel, 1,000 g, 1,000 cycles)	70mg
	Hardness	ASTM D 2240 (Type D)	67
	Residual indentation	EN 433 / Din 51955	< 0.04mm
		ASTM F 1914 (<8%)	< 8%
	Static Load Limit	ASTM F 970	2.00mm: 1,500lbs/ square inch; Long term, 3.00mm: 2,500lbs/ square inch; Long term,
	Flexibility	ASTM F 137	12.7mm mandrel without crack or breaking
Castors Wheel test	EN 425	No Damage	
ELECTRICAL FEATURES	Electrical Resistance	DIN 51953 / EN 1081	EC 5.0×10 ⁴ < R < 10 ⁶ / SD 10 ⁶ < R < 10 ⁸
		ASTM F 150 / ESD F 7.1 / UL 779	EC 2.5×10 ⁴ ~1.0×10 ⁶ / SD 1.0×10 ⁶ ~1.0×10 ⁹
	Static Generation	EN 1815 / DIN 54 345	< 100 Volt with ESD Wax
		AATCC 134	< 100 Volt with ESD Wax
	Static Decay Time	Mil B 81705C (5Kv to 20v)	< 0.1 Sec with ESD Wax
EN 100015 (CECC 00015)		< 2.0 Sec with ESD Wax	
FTM 101 B Method 4046 (<0.5 Sec)		< 0.01 Sec with ESD Wax	
FIRE RESISTANCE	Reaction to Fire	DIN 4102 / Onorm B3810 / Onorm B3800	B1 (Difficult to ignite)/Q1(Low smoke development)
		BS 476; Part7, 1997	Class 2
		prEN 13501-1	Class BFL S1
		prEN ISO9239-1	0.8 kw/m²
	Critical Radiant Flux	ASTM E 648 / NFPA 253	Class 1 (1.08w/cm²)
	Flame Spread	ASTM E 162 / ASTM E 84 / NFPA 225	NFPA Class B / UBC Class II (<75)
	Smoke Density	ASTM E 662 / NFPA 258	Passed (<450Dme)
Thermal Conductivity	DIN 52612 / NFX 10021	0.309 w/m.k	
Underfloor Heating	DIN 52612	Suitable - Max 30 C	
CHEMICAL RESISTANCE	Chemical Resistance	EN 423 / DIN 51958	Excellent;Test Report available on request
		ASTM D 543 / ASTM F 925	Excellent;Test Report available on request
SLIP RESISTANCE	Slip Resistance	Wet	
		DIN 51130 / BGR181 (ZH1 / 571)	R9
		ADA Requirements	> 0.6
LIGHT RESISTANCE	Color Fastness	prEN 13893	0.89µ
		Dry	> 0.3
		EN 13893	> 6
OTHER PROPERTIES	Resistance to Light	EN 20105-B 02	> 6
		ISO 105 B 02, Met. 3 - DIN53389	7
		ASTM F 1515 (ΔE<8 ave, max)	< ΔE = 8.0
OTHER PROPERTIES	Impact Sound Reduction	ISO 717 / 2	4 dB
	Sound Absorption	ISO 140-8 / ISO 717	3 dB
	Water Absorption	ASTM D 570	0.03% water weight gain
	Ease of Decontamination	DIN 25415-1 / ISO 8690	Excellent
	Recyclable		Yes
Formulation		No Carbon contamination	

We reserve the right to change specification or design and supply products which may differ from those described and illustrated without notice and without liability. © 2010-2023 Rhino Technologies Co., Ltd.



Corporate Headquarters

111 S.K.V. Building, 4th Floor
Soi Sansabai, Klongton
Klongtoey, Bangkok 10110
Thailand

T/ (662) 661 2990

F/ (662) 661 2991

China Office

593, Tongjiang Road
Jintian Plaza 828-830
Changzhou 213022
Jiangsu, China

T/ (86) 519 8988 3171

F/ (86) 519 8988 3901

Hong Kong Office

Unit 908, 9/F, LT Tower
31 Chong Yip Street
Kwun Tong, Kowloon
Hong Kong

T/ (852) 2865 6816

F/ (852) 2865 6813

Production Unit

Hengshanqiao
Wujin District
Changzhou 213119
Jiangsu, China

T/ (86) 519 8860 7959

F/ (86) 519 8860 5659

www.RhinoAccessFloors.com